

St Keyne and Trewidland **Informer**



Enjoying free defibrillator training from
SW Ambulance Service

No. 4

August 2024



PHOENIX PLUMBING & HEATING

- ▶ Gas & Oil Engineer
- ▶ Plumbing & Heating
- ▶ Installation & Servicing
- ▶ Mains Pressure Cylinders

**Call Gary: 0774 384 6972 email:
phoenixplumbingsw@gmail.com**

Close

FRANCIS

• Stone Walling & Patios Ltd •

**Traditional and contemporary
works undertaken**

For a quotation please contact us

01822 458073 • 

www.jafrancisstonewalling.co.uk

**City &
Guilds**

QUALIFIED



Trewidland Village Hall

What's been happening since the last informer?

Our **Games Night** in May, where those who came took part in Cornhole, Animal Bingo, Linkee and Pictionary raised nearly £100. Lots of lovely comments

received after the events, "It was great fun!", "Great evening...We had a lovely time" The prize-winning hamper was full of local produce, including, pasties from Denise Payas and scones from the Cornish Scone Co and even some homemade sloe Gin and beer.

Despite the fun and fundraising and 20 people came in total!

In sad news, our **Post Office**, which I discovered some people in the village did not know existed, has reduced its hours from two to one. Please support it or we will lose it. There are no funds to pay for the hour from 11.45 to 12.45 on Tuesdays.

New doors were fitted for the under-stage storage thanks to the excellent carpentry skills of Matt Low from Looe. We will now be less likely to lose a finger or thumb whilst gaining access to the tables or Ju Jitsu equipment. The plant pots by the entrance were replanted by our mystery donor which always provides colour to the outside of the hall, and we would like to thank you, whoever you are? The grass has been strimmed around the sides and back of the hall too. The committee are currently looking for someone to help with maintenance of the building.

The **Summer Art Exhibition** was privileged to be able to present the most incredible local crafts and different from those shown at the **Spring Art Exhibition**. There was a giant quilt of a shiny dragon, the most intricate paper tole work and delicate and colourful crochet flowers to name but a few of the exhibits. Despite there being fewer visitors than the previous exhibition, the one resounding memory from the event was talking to people who were saying that they had lived here for many years and didn't know anyone who was there. They were delighted to connect with people. I hope that even if only a few people come to the events that are organised it is worth it to make these connections.

Our ever-popular **Quiz Night** was very well attended on Saturday July 13th and raised an incredible £175. The homemade food served was delicious; both savoury and sweet refreshments provided.

The date for our next **Village Quiz** has been set for Saturday October 26th and for those of you who missed out on Greg Chapman's last show at

the hall in January he is returning on Friday November 29th with his new show "**The Legend of Houdini**".

We hope to see you there, or at any of our other events in the hall.

You would be most welcome!

Trewidland Village Hall Committee

Contact: Nicky Fairey 07764846658

www.trewidlandhall.wixsite.com

Browns Nurseries

Trewidland, Liskeard, Cornwall PL14 4ST

We are a wholesale Nursery located in the centre of Trewidland opposite the old shop. Supplying bedding plants, Vegetable plants and Hanging Baskets to various local garden centres. Alongside this we also supply Liskeard in Bloom and Looe in Bloom.



Telephone: 01579 381435

Or Mobile: 07813 043175



Find us on Facebook
@Browns Nurseries



Open Monday to Friday 8am - 4:30pm



Looe Valley Plants

Specialising in Succulents, Sempervivums,
Unique Arrangements & Terrariums

Open: Monday, Tuesday, Thursday & Fridays. 10:30am - 3pm

Closed: Wednesday, Saturday and Sunday

Come along to our retail section within the nursery located in Trewidland! Use our What3Word app location to find us more precisely. More info available on our social media!



Have you ever tried your hand at an arrangement? We accept Walk ins for:

- Hanging Basket
- Succulent Basket
- Terrariums!

And lots lots more!
Find us on Social Media!



@LooeValleyPlants



ST KEYNE CLUB



If you're new to the village, or even if you've been here some time and haven't got round to it yet, why not pop in to your local Club? We stock keenly-priced draught real ale, cider and lager, bottled ciders and beer, a selection of wines, gins and a wide range of other spirits, soft drinks and snacks as well. There is also a coffee machine in the Hall supplying excellent freshly-ground coffee at just £1 a cup. It's not only a great place to meet your friends and neighbours, but it is run entirely by volunteers and all profits go towards funding the Village Hall, so call in for a drink and a chat, and help maintain this valuable village amenity at the same time.

Free  is available. Well-behaved dogs are welcome.

All major credit/debit cards accepted.

As we are a members' club, the terms of our licence mean that you need to be a member or the guest of a member to enjoy the facilities - but it is free to join, so just call in during opening hours and ask for an application form.

OPENING TIMES

Friday - 8pm to 11pm

Saturday - 8pm to 11pm

Sunday - 1.30pm to 5.30pm

Please note that these times are subject to the availability of staff and may be subject to short-notice change.

If you are hiring the Village Hall for a party or other celebration, use of the Club is also available to members - just ask at the time of booking.

Events organised by non-members can also use the bar facilities, but will need to obtain a Temporary Entertainment Notice to do so. Details can be supplied on request.

We wish to remind parents that children under 16 are not allowed in the club
Unaccompanied

FORTHCOMING EVENTS

10 August	Burger & Banger night & 60's disco	7.30pm
29 August	Bingo	6.30pm

Rosewood Property Services

rosewoodpropertyservices@outlook.com

079 29 59 63 38



Furniture Joinery Kitchens
Property Maintenance
Emergency Holiday Home Call Out



MAKING GUEST STAYS MEMORABLE

Caring for your holiday home,

- * Co-hosting
- * Housekeeping
- * Welcome Hampers

07709 353103 and going the extra mile
cleaningladycornwall@gmail.com

for your guests

Church News



The Concert on the 15th of June with Levow Kesson wasn't very well attended partly due to the fact that there were several other attractions in and around the area and partly in the last Informer I had said £5.00 entrance and the choir didn't want any charge, anyway those that came enjoyed it and the bonus was lots of nice refreshments to tuck into afterwards. As a contrast at our cream tea afternoon on the 30th of June, the sun shone and the volunteers in the kitchen were kept very busy, we had a raffle and a quiz and £528.00 was raised for church funds, thank you to all those who came along in support and thank you to Sharon for organising and hosting the event. We had a fun afternoon in Jubilee Park in May with Messy Church the dates for the next ones are the 14th of August and the 30th of October. Our new Vicar Mark Wade and his family are joining us in September, his Installation Service is on Thursday the 5th of September in St Martins Liskeard at 7.00 pm then on Sunday the 15th of September a Benefice Service will take place at 10.30am where the congregations of Dobwalls, St. Keyne and St. Martins will all worship together, again in St. Martins followed by a shared Lunch.

Now I am afraid I have to end on a sad note, two much loved members of our church family have sadly passed away, Mike our organist who has been playing for us for so many years and Roger who a lot of you know through his work not only with the church but with the village hall and history group, we shall miss them both very much indeed and our love, thoughts and prayers go out to Denise and Gill at this very sad time. Death is just another step along life's changing way,

No more than just a gateway to a new and better day,
So let your grief be softened and yield not to despair,
You have only placed your loved one in the loving father's care.

God Bless.

Margaret Smees



MINERS & O'DONNELL
GENERAL BUILDER

**ALL ASPECTS OF BUILDING WORK
UNDERTAKEN.
BUILDING, RENOVATIONS, ROOFING
PLASTERING & MORE.**

FREE QUOTATIONS GIVEN



Michael Miners
01579 342551
07464 370226

Neil O'Donnell
01579 344813
07446 293216

maobuildingcontractor@gmail.com

The Gardening Year

Leigh's seasonal tips and things to do in the Garden



August:

Keep dead heading your flowering plants to prolong the season and make sure your containers are well watered either early in the morning or in the evening is best to reduce evaporation and avoid leaf scorch. Think about buying or ordering spring bulbs for next years display. In the veg garden you can cut out the old raspberry canes that have fruited and plant salad crops such as cress, rocket & lambs lettuce.

September:

Keep feeding and watering beans to keep them cropping but prevent them from setting seed . When they have finished cut them back but leave the roots in to release beneficial nitrogen into the soil. Autumn is a good time to repair or replace a lawn by seed or turf. You can divide hardy perennials that have finished flowering to make extra plants. Lift them carefully, divide into smaller pieces , replant or pot them up. September is also a good time to plant daffodils, narcissus, crocus & alliums. It's too early for Tulips!

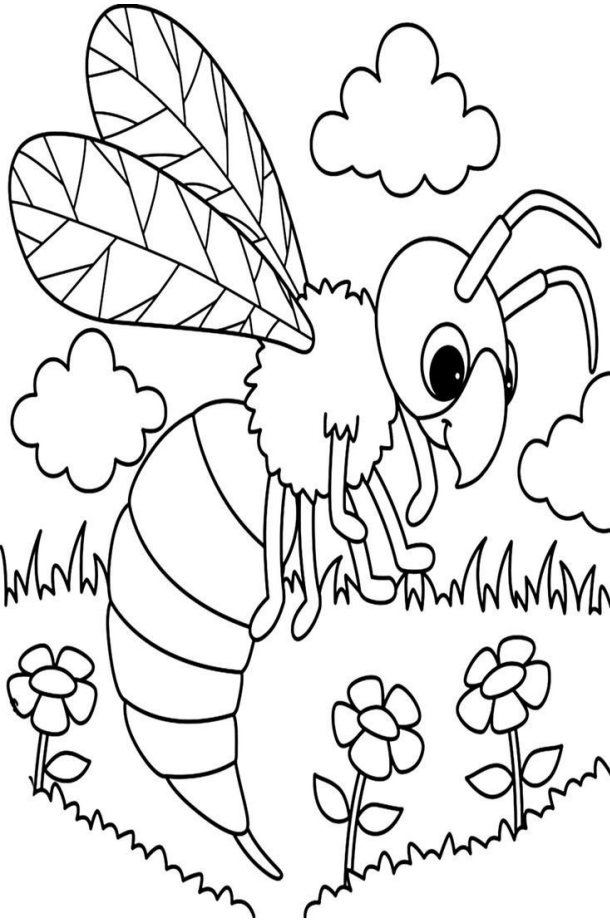
October:

Prune climbing roses, harvest fruits and divide rhubarb if it is overcrowded. Cut back some perennial plants but leave a few to provide shelter for insects over winter and seed heads for the birds to eat. Time to bring tender plants back into the greenhouse and protect half hardy plants. Lift and store your dahlia & begonia tubers in a frost free environment, especially if your garden suffers from winter wet .

Leigh Woods

Kid's Corner

Colour me in



In My Castle

Word Search



GATEHOUSE

GREAT HALL

HERALDRY

JESTER

KEEP

KING

KNIGHT

MOAT

PORTCULLIS

PRINCESS

QUEEN

RAMPART

SECRET PASSAGE

STABLE

TAPESTRY

THRONE

TOWER

TURRET

Quiz

1. When do owls sleep
2. What do wasps mainly eat
3. Where will the Parish Council install Kissing gates
4. Who assist injured people on moorland

Answers to the Quiz in Informer No. 3

1. St Keyne VH or Jubilee Park
2. Under the solar panels

ST KEYNE GARDEN CLUB



Over the summer the club has been out and about visiting members own gardens and Trevina House in St Neot. We have also welcomed several new members from St Keyne and Trewidland.

Our next club meeting is back in the St Keyne Village Hall, 7.30pm on September 19th. Nick Bacon will be planting a container to reduce your carbon footprint.

On October 19th Tricia Howard will be telling us how to create a wildlife friendly garden.

Before then we have our Produce Show, August 10th in St Keyne Village Hall. This is a friendly and fun show where you get to judge the exhibits. Exhibits can be accepted in the village hall from 10.30am-12 and free entry to the show opens to everyone from 2pm. There will be a raffle and refreshments.

If you haven't already visited this year or would like to come again, the garden at Lametton Mill (opposite St Keyne Railway Station) is open for charity in the National Garden Scheme.

Sunday 25th August and 8th September, 11am-4pm, entry is £5 with the proceeds going to the charity which provides support to many nursing and health organisations such as Marie Curie & Macmillan

Don't forget new members are always welcome at the club, just turn up at a meeting, get in touch stkeynegardenclub@btinternet.com or look for news on our facebook page.



Leigh Woods

Play Steel Pans – feel the sunshine! – It’s Pantastic!!

If you happened to have heard the faint sounds of the Caribbean wafting upon the wind, whilst wandering through Trewidland, your ears were not deceiving you. In a converted animal shelter, which was once the home of ostriches and more latterly sheep, a steel band can be heard practising their music. From the more traditional tunes of Yellow Bird, Jamaica Farewell and Stand by Me, to the less familiar music of Palladio and El Cumbanchero, and the even more unexpected William Tell Overture, one can be guaranteed a wide variety of genres.



I’m Nicky Fairey and I have been teaching the steel pans to children and adults for 19 years and brought them to Trewidland when I moved here 3 ½ years ago. Having initially taught in Junior Schools, with the added responsibility of music coordinator,

my passion for the instrument was realised, after suggesting the school might like to purchase a band! It was more of a joke in response to a request for ideas on what to spend

the "Wish List" money at the end of the school year. Most teachers had asked for a clock or globe for their classroom! When the governors agreed I was so shocked and rang round some music shops, despite knowing nothing about them. Fortunately, with the help of the local Music Service instruments were sourced and a peripatetic Steel Pan teacher was found. The school bands went from strength to strength and played at many local events, raising money for the school.

As the peripatetic music teacher wanted to be paid for outside gigs, I accompanied the children instead. If a child could not play, I took their part and gradually became more proficient. When the Junior children left for Senior School they wanted to continue playing, so I learned with them, in an after school club.

Two stand out memories were playing in the Royal Box at the Fairfield Halls in Croydon and coming second in a major music competition when I was 6 months pregnant with our daughter.

I nearly had her on the spot I was so excited, as the children were up against some very experienced bands!!

After some workshops in the Trewidland Village Hall in the Summer of 2021 two groups were formed; one group called

Tin Pans People, who play for fun, and the other group called Pantastic who enjoy performing. This year and last year they played at the Royal Cornwall Show on the Kelly Stage.

They have also performed in Duloe Jubilee Centre twice, at the Liskeard Ploughman's Festival and later this year have been invited to play at the Great Trethew Vintage Rally.

Playing pans is great fun and easy to pick up if you have a good sense of rhythm and memory. My memory is awful, but then it is full of notes so there's no room for anything else! The players play one of 4 different pans; the Tenors or lead pans, which tend to play the tune like the lead singer in a band, the Seconds are the harmony, like the backing singers in a band, the Double Guitars, so named because they strum out the rhythm like a Bass Guitar, or the Bass pans which keep the main beat.



All have been made from oil drums either in Notting Hill, Forest Hill or Trinidad. The players swap pans for each piece, although most bands have a particular pan they like to play, and the pieces are performed from memory. Having the different pans in the band provides a wonderful blend of harmonies. One member of an audience once said, "Where's the backing track?" unaware the whole sound was from the pans alone.

Pantastic choose not to have a drummer, which is very characteristic of a Steel Band, and this impressed Terry Noel MBE who is the leader of the Melodians Orchestra as he could not fathom how the band kept time. However, I feel that drums can drown out the pure sound of the pans. If you have not had the pleasure of hearing the pans, and would like to, wander passed Trewidland Village Hall on a Tuesday morning. Follow your ears and if you find the source you're very welcome to come and listen. If you're unable to then you could listen to some of my previous bands on my YouTube channel. I would highly recommend my daughter's old band, called Pandemonium.

<https://www.youtube.com/@Crazyaboutpans> or my Facebook Page "Cornwall is Pantastic"

<https://www.facebook.com/Pantastic2021>

Enjoy!

Our feathered friends

We are fortunate enough to have a good sized garden with some large trees including some of the dreaded Leylandii. Despite these fir trees being so unpopular to us humans they became appealing to a young tawny owl who arrived about 6 years ago.

I have always referred to it as 'him' however I'm no expert so it could well be 'her'. This owl would sleep during the day in the top of the fir trees which are quite dense so I hardly ever see it through the day but evenings as the sun went down it could be heard or seen

moving about the garden before venturing off to pastures to feed. After a couple of years owl number two arrived obviously our owl had found itself a mate. Not being sure if this was just a flying visit or if this one also was going to stay I did nothing but observe them for the first year.

As winter approached with both the owls still about I decided to build a nesting box. I researched the shape and size needed and the best place to site the box once ready. Up the ladder went my son with this heavy box and attached it high up a tree in good time for the Tawny owl's early nesting season.

By now I am well used to having the pair of birds in the garden and despite them being night owls I would hear them regularly talking to each other during the day. They roosted several metres apart and made different sounds. One would start the conversation and then the other reply.



As we moved on to late winter/early Spring things had gone very quiet, my husband insisted that they had moved on however I was convinced they were still here somewhere. Then one day when in the garden I heard the conversation start from the top of a tree, at first I didn't hear a reply but soon as he continued to talk to her I realised she was actually replying very quietly from inside the next box. Oh how exciting things had suddenly got.

As time went by even though I didn't really know for sure if there were any offspring in the box. I did have an idea that there might be as I had spotted the male owl out hunting during the day on a couple of occasions.

Then came the 1st of June, both the owls were making quite a bit of noise from up in the trees and a baby owl was shouting back from the box, I went to see what was going on and I could hear scrabbling coming from the nest box, then suddenly up popped a cute owlet who sat at the box opening shouting back to it's parent.

The owlet only stayed at the box for 48 hours then it ventured off into the tree and on to a hedge. After this the

task every day from now became to find the owlet somewhere in the garden, not just for my satisfaction but friends would arrive it seems it was far more popular than I was.

The owl family hung around in the garden for about three weeks before heading off to the woods for new adventures, the parent owls stay with the baby protecting and feeding it until it's three months.

Later that year when winter came the pair of owls reappeared back in the garden. We had left the nest box in the tree and had not touched it but in





the Spring they didn't use it. We had no idea if they ever did nest in the same place twice or if we should have cleaned it out, with nothing to lose we took it down and looked inside to find just the original sawdust and an egg that hadn't hatched. The box was cleaned out and reinstated. Early this Spring the female owl could be heard answering the male from inside, we had hopes that something exciting was going to happen again. But alas after a couple of weeks the female had gone silent, the male kept talking to her but no reply. I think that possibly something happened to her when she was out hunting and she never returned.

Unfortunately not all stories have a happy ending but we do feel truly blessed that we were able to witness the early days of one little owlet.

Anita Ivey

FOOTS BARN THEATRE

Part 2

Sample chapter by Hon. Oliver Isaac Foot

We had made one important agreement. No drugs. Although all of us had indulged--some more than others with the usual, hash, speed, acid. But We knew that the outside world would suspect. Our craft--our art-- was sacred--theatre and music--mustn't risk our dream--by getting busted. So no drugs.

Unanimous agreement.

Even though we looked like a bunch of hippies --Tom's hair was down his back--we were

adamant in our image and PR that we were not a commune--no--we we are community dedicated to bringing a unique quality theatre to the people. At the same time we grew our own vegetables--kept our own goats and a few chickens. A guy called Tank who came from up north joined us early on. We had a community meeting and put him in charge of the goats and chickens--we accepted him. Tank was Tank. Burly and

full of rugged northern character. Maggie --one of the actors who trained with me at the Drama Studio--had a boyfriend called Terry, who was heavily into the Eastern religion. In a kind of dark way. Every morning he would sit naked on a bucket in front of his shed and look out across the Cornish country side and empty his bowels. He looked after the vegetable garden which was laid out in front of his shed. He frightened us. He thought that everyone else were just playing with Nirvana etc. But he was REALLY there as he claimed to me, "I am the ram leading the sheep". In the end he lost it altogether and stole the theatre company van and disappeared to London. We retrieved the Foots Barn van and lost him. Relief. We heard three years later that he was working on a construction site eating pork pies. Unheard of!! I mean-- he was a committed macrobiotic--you know brown rice and the yin and the yang of vegetables.



To be continued on page 19

My father came to see The Bald Prima Donna at Plymouth Arts centre --I was terrified --I mean you would be too--what would he think? It was absurd theatre-taking off our bourgeois society. Condemning the system. After the play he patted me on the shoulder and said. "I finally understand what you are doing. Well done my boy". Did he? or was he so confused that

was all he could say. I certainly appreciated it though. I played

Hamm (Becketts Endgame) in the Barn theatre at Dartington Hall, Andy Slimon played Clov. The head of the South Western Arts--the grant making agency--of the Arts Council came and saw it and then wrote to us that it was the best piece of theatre he had seen. Then we applied for a grant. They said if you get Cornwall County Council to back you--we will. Cornwall County Council--were not into us-- as they were a bunch of self important but lovely old Cornish fuddy duddies. They didn't like the idea that we were not from Cornwall. So we had a fight on our hands. We took out a full page ad in the Western Morning News, the regional daily newspaper, on the day Cornwall County Council were to meet. We got about a hundred people to pay one pound and put their name to the ad. It was impressive man!! I spent three days on the phone using my Jamaican hustle to chase hundreds of people. We got all the MP's from Cornwall and Plymouth, Daphne Du Maurier, Barbara Hepworth, Ted Hughes and all the leading artists as well as farmers, shop keepers, wigmakers, bank managers. preachers and-- YES -we got it-- THE GRANT-just--and then the Arts Council came in with £8000 a year. We were official!!!. The only professional Theatre company in Cornwall.

To be continued on page 21



KARREK STONE

Bespoke Slate Cutting



07701 348 132



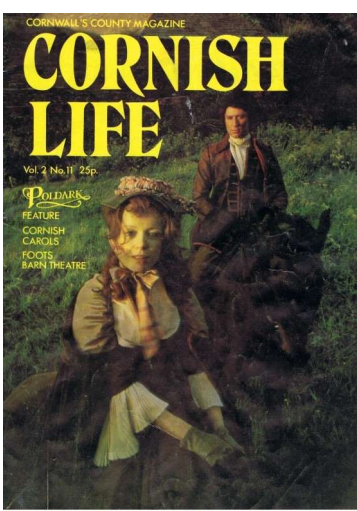
www.karrekstone.co.uk
karrekstone@gmail.com



6 Gilston Road,
Saltash,
PL12 6TW

- HEARTHES
- WORKTOPS
- STEPS
- WINDOW CILLS
- COPING STONES
- SHELVES
- TABLE TOPS





Yes the lifestyle at Foots barn was an incredible experience. It was a real achievement that we did live together all twenty of us --devoted to our art--theatre and music. We learnt how to accept and respect each others weakness's. We learnt how to be poor. We learnt how to rely and support on each other. We had fantastic rock and roll times and lived life to its fullest. We learnt how to live and work as a team We delivered top class theatre and music. We showed that it is possible to create and produce without any money to speak of. For the first two years none of us had any money of our own. We had great parties and we brought joy, laughter and pure entertainment to a county deprived of

such. We used our God given freedom to produce a lifestyle that brought a new dimension and radiated to people that there is a choice in life and that one can escape the chains imposed by society. But it came at a price. One morning I was on my way to Fooks barn from my new home in Looe when I was stopped by Maggie in the lane half a mile from Trewen. "Turn around Olly Turn around the police are busting them."

"What?" I said in disbelief.

"NO really Olly the police are swarming the property, they found all the dope we were growing".

I returned as fast as I could to my cottage and vacuumed the whole house. I was sure they would come and get me as joint owner of Trewen. But they didn't. Well I suppose it had to happen. We had it coming and of course it hit the newspapers and about six of the community were charged for possessing cannabis. I helped get them out on bail.

Despite this blow and the resulting publicity Footh Barn continued to flourish. Their theatre upstaged the bad PR. A few years later they moved to France and have toured the world visiting Australia, South America, Africa Russia, and Europe.

Children of the original group continue the work. They are living legends who have not forgotten their roots in Cornwall."



Marvel and Mum

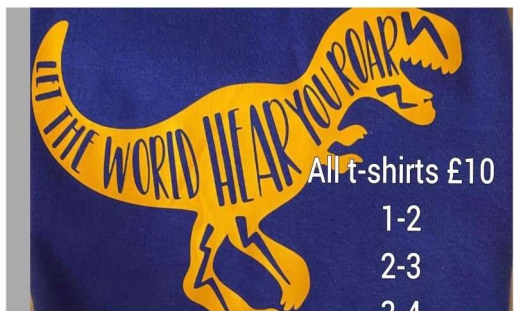
We make T-shirts and more, check us out on Facebook

Based in Liskeard, United Kingdom Contact

us on **07808 803141**

Or email us

marvelandmum@gmail.com



All t-shirts £10

1-2

2-3

3-4

4-5

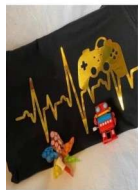
5-6

7-8

9-10

11-12

12-13



Jumpers £15



Wall Hangings £8

Cups £5



All T-shirts £10



Bags £18

Parish Council News

What weather we've been having! Periods of heavy rain followed by days of warm sunshine, all making the roadside hedges taller and wider! We're all having to take greater care on our lanes, where visibility is restricted in the summer months, whether driving, riding or walking, for our own and others' safety.

We're pleased that at our request (and the intervention of County Councillor Armand Toms) Cornwall Council has made an exception at Horningtops junction to the regulation preventing roadside hedges being cut back during the nesting season. The hedge trimming is very welcome at Horningtops – a junction where great care is needed at the best of times.

Your Parish Councillors have continued meeting with Officers of County Council Highways and Road Safety Team to discuss safety concerns along the B3252. At our meeting in May CC agreed to trim vegetation near Fursdon Cottage and install new road signs warning of traffic emerging from the farm. They also agreed to consider painting central hatching on the road at Bylane End to reduce overtaking and install warning signs aimed at motorcyclists along the whole stretch of the road. They will also carry out a speed monitoring survey and we agreed to meet again to look at the survey results.

Many of our Public Right of Way footpaths in the Parish are short routes across fields. The Parish Council is grateful to those landowners who clear the access to paths over their land; and to walkers who keep dogs under control, stay on the path and close gates after them. I'm pleased we've agreed, in partnership with the landowner, to install 2 Kissing Gates on the Public Right of Way between the lane at Lower Town Farm in Trewidland and the lane at Lake. It's one of our short routes which, combined with the lanes, makes a short circular walk. The new gates will make it more accessible for everyone.

We are also launching a new "Green Team" for St Keyne and

Trewidland. The launch meeting is on Thursday the 12th of September at St Keyne Village Hall. More details are in the leaflet delivered with this edition of the Informer. Please come and join us.

Enjoy the rest of your summer!

Kevin Shovelton

What 's on

Regular Events

Monday	Weekly	09.30 - 11.30 17.30 - 21.30	Keltic Kymber Dog Training	Trewidland VH
Tuesday	Weekly	11.45 - 12.45	Post Office	Trewidland VH
Tuesday	Weekly	17.30 - 21.30	Keltic Kymber Dog Training	Trewidland VH
Tuesday	Weekly	14.00 - 16.00	Brench Club	St Keyne VH
Wednesday	Weekly	mornings	Jay Dog Training	Trewidland VH
Wednesday	Weekly	10.30 - 12.00	Coffe Morning	St Keyne VH
Wednesday		Last of the 19.30 onwards	St Keyne History Group	St Keyne VH month
Wednesday		2nd of the 19.00 onwards meeting Trewidland VH	Parish Council	St Keyne VH / month alternate month
Thursday	1st of the month	19.30 onwards	WI	Duloe Jubilee Centre
Thursday	3rd of the	19.30 onwards	Gardening Club	St Keyne VH month

Thursday

Weekly

evening

Karate / Ju Jitsu Trewidland VH

Saturday

1st of the

Karate / Ju Jitsu Trewidland VH month

What's on

in the parish

03.08.2024	10.30-13.00
14.08.2024	15.00-17.00
10.08.2024	14.00
10.08.2024	19.00

During				
Coffee	21.08.2024			
	Morning			
25.08.2024	11.00-16.00			
29.08.2024	From 18.00			
05.09.2024	19.00	Big Breakfast	St Keyne VH	
08.09.2024	11.00-16.00	Messy Church	St Keyne VH/Jubilee Park	
12.09.2024	19.30	Produce Show	St Keyne VH	
14.09.2024	19.00	Burger & Banger 60/70's theme	St Keyne VH	
15.09.2024	10.30	Podiatrist	ST Keyne VH	
19.09.2024	19.30	Open Garden £5 entry Bingo	Lametton Mill Keyne St Keyne VH	
25.09.2024	10.00 - 12.00	Installation Service	Sr Martins Church Liskeard	
26.09.2024	From 18.00	Open Garden £5 entry	Lametton Mill Keyne	
05.10.2024	10.30-13.00	Green Team Launch Meeting	St Keyne VH	
19.10.2024	19.30	Burger & Banger	St Keyne VH	
26.10.2024	19.00	80's theme	St Keyne VH	
30.10.2024	15.00-17.00	Benefice Service Nick Bacon at	St Martins Church Liskeard	
31.10.2024	18.00			
29.11.2024	19.30	St Keyne Gardening Club	St Keyne VH	
07.12.2024	10.30-13.00	McMillan Coffee Morning Bingo	St Keyne VH St Keyne VH	
		Big Breakfast Tricia Howard at St	St Keyne VH	
		Keyne Gardening Club	St Keyne VH	
		Quiz Night	Trewidland VH	

Messy Church
Bingo
Legend of Houdini

St Keyne VH/Jubilee Park
St Keyne VH
Trewidland VH

Big Beakfast²³

St

Keyne VH

The Farming Diary

As a community that is surrounded by agriculture, but for the most part having little involvement in it nowadays, we thought it might be useful for the people of St Keyne and Trewidland to have a brief insight into the agricultural calendar, how our work changes through the seasons, and why we can be seen doing what we do in the fields. Every farm is unique, and things will happen differently depending on where you look and which farm you drive past but, this is what happens at Pensipple Farm, a small, mixed family farm on the edge of Trewidland.



Summer

Summer is here and harvest is hurtling towards us at a rate of knots. It's been a wet run so far. We've had more rain in the first week of July than in the whole of June which has meant disease has crept into the winter wheat particularly badly in these last few weeks. There's little we can do about it at this late stage so we watch it ripen now and hope there's enough green leaf area left to finish filling the grain. That being said, our spring oats, which will be harvested towards the end of August and will hopefully go to make biscuits (as well as run the central heating in the farmhouse), are looking fantastic. Fingers crossed they keep going like they are!

We managed to get all our haylage cut, baled and in the shed in June. We make around 200 bales a year for the horse feed market, delivering them to livery yards and horse owners all over Southeast Cornwall. Some of these bales will also supplement the grazing for our sheep over the winter, usually just through December before they move out onto the cover crops in January.

The ewes are getting well and truly fed up with their increasingly bolshy lambs and we will look to wean them by the end of July. They are now competing with the ewes for grass and are much less dependent on milk, so it's nearly time to split them up! There's a lovely crop of lambs this year and they will be weaned onto a herbal ley, full of a diverse range of grasses, legumes and herbs. We sell about 1/3 of our lambs direct to the public and the first of them will be ready mid-autumn, so if anyone fancies some local lamb for the freezer, let us know. The ewes were all shorn in mid-June and the wool put to one side. We are working with a small-scale wool spinner and yarn maker in London who blends our wool with natural fibres like hemp and nettles to make very fine knitting yarn. It's a bit of a different direction for us. Most UK wool gets sold to British Wool for less than the cost of shearing. We're hoping this small business can add some value to this amazing natural product that is completely renewable, insulates, is fire retardant, is 50% carbon, and is woefully undervalued!



Antony Ellis

Advertising costs to cover 4 issues

Black and white

1/4 page £15.00; 1/2 page £30.00;

Full page £45.00

Full page 1 issue £25.00; 1/2 page 1 issue £20

For coloured ads please enquire for price

Informer@stkeynetrewidlandpc.org.uk

Wednesday Coffee Mornings in St Keyne Village Hall

There is an opportunity to meet others in your community held every Wednesday in the Village Hall from 10.30am to 12 noon. Please come along and join us, meet your neighbours and have a chat about anything and everything! A range of coffees are available from the Hall's machine and hot water to make your own tea if required all for the price of £1.

Tracey Mustoe, a podiatrist, visits every 6 weeks during the Coffee Morning and takes bookings to see her privately in the bar area. Her next visit is on Wednesday 21st August.

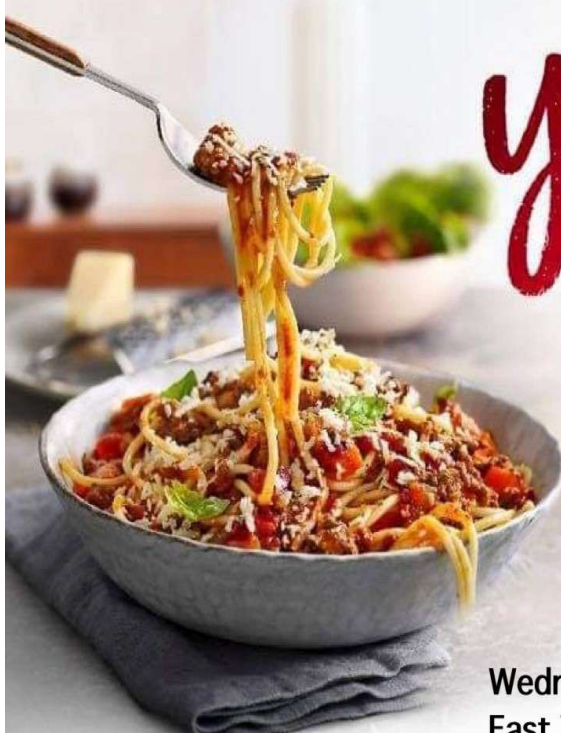
We also have regular visits from our local Police Community Support Officer, Steve Edser, who is happy to discuss any issues or queries regarding police matters. He is happy to arrange a private meeting if that is needed or appropriate.

This year the annual MacMillan Support Coffee morning will be on Wednesday 25^h September.

We would be so pleased to see you any Wednesday.

Sally





**yes
you
can**
with
**Slimming
World**

Monday
The Millpool Centre Looe
Monday 4pm, 6pm
Call Rachel 07463 929696

East Taphouse
Thursday 9.30am
Rachel 07463 929696

Monday/Tuesday
St Martins Church Centre
Liskeard
Mondays 5.30pm or 7pm
Tuesdays 9.30am or 11am
Elaine 07818094119

Wednesday
East Taphouse hall
East Taphouse
Wednesday 5:30pm
Kathy 07477425715

Friday/Saturday
Millennium House
Pensilva
Fridays 5:30pm
Saturdays 8am & 9:30am
Hayley 07966370233

slimmingworld.co.uk

Slimming[®]
WORLD

St Keyne Village Hall



Our Bingo night at St Keyne Village Hall has been amazing and progressing with numbers. A really fun filled evening. The next bingos are

Thursday 29th August

Thursday 26th September

Thursday 31st October

It will be a pleasure to see everyone again.

The first 40/50's themed Burger and Bangers night went amazing! Really fun packed evening with people dressing up, dancing and having a good feast!

The next Burger and Banger event is the 60/70's which is on Saturday the 10th August. Come in your best dressed era from the 60's/70's with music and food to go along with. Plus a special prize for the best dressed adult and child

Saturday 14th September 80's themed Burger and Banger night again with best dressed from that era with music and food to go alongside. Plus best dressed will receive a prize.

Another great couple of evening was watching the football with England getting to the final!!! Had 25/30 people in the club. Really enjoyable and great atmospheric night.

To hire our village hall please contact us via our FB page or email Dom: stkeynevsecretary@gmail.com

Your Attention Please !

If you have any personal possessions or equipment that are currently stored in St Keyne Village Hall, in the store-rooms, kitchen or upstairs rooms, please come and collect them during the usual opening times of the hall. For instance on a Wednesday morning 10:30 to 12:00 (coffee morning) or when the social club is open. We intend to have a good clear -out of un-used items in September, extra helping hands would be

most welcome. Dates and times will be on our Facebook page.

Jane Page

Interesting Hobbies



East Cornwall Search and Rescue Team

East Cornwall Search and Rescue Team is based locally in Bodmin, Cornwall. The Team is staffed entirely by volunteers who provide an inland Search and Rescue service across the East Cornwall area.

The Team covers rural areas from Goss Moor to Bodmin Moor, it also responds to incidents in more urban and semi-rural areas from St Austell in the West to Bude in the East. We also operate in other areas across the South West and further afield to provide assistance to other teams as required. East Cornwall SRT is proud to be one of the many Mountain Rescue England Wales (MREW) affiliated mountain rescue teams operating across England and Wales. This requires us to be competent in many



Team Members prepare a stretcher for casualty evacuation

disciplines, such as navigation, Casualty Care, rope rescue, underground (mine) rescue and many other skills, which we regularly use on incidents.



Team Members evacuating a casualty up steep terrain at Golitha Falls

In order to provide a 24/7 response every day of the year we operate two specialist four-wheel drive vehicles and an Incident Control vehicle from our Rescue Centre in Bodmin. Whether it is a semi-rural search for a missing elderly person or a major moorland search in harsh conditions for a lost or injured walker, our highly trained team members and three Mountain Rescue Search Dogs are valuable resources for missing person

searches who are deployed on behalf of Devon and Cornwall Police.

The Team's specialist rescue equipment including helicopter winchable stretchers, thermal casualty bags and rescue vehicles are also regularly deployed by South Western Ambulance Service and the Police for rescues from difficult to reach areas such as Bodmin Moor or Golitha Falls.

Whether it's a rescue from an inland crag or quarry, or a technical stretcher evacuation from a gorge or mineshaft, the team maintains a skilled core of members trained to national standards.

All East Cornwall SRT members are trained to work safely



Team Vehicle Bodmin Mobile 3 and a SWAST ambulance attending an incident

around water, with some members qualified as specialist Swiftwater and Flood Rescue Technicians, competent in responding to urban flooding, vehicles stuck in flood water, or riverbank searches.

Many members have completed the MREW Remote Rescue Medical Technician certificate which allows us to deliver high quality and effective patient care in the most remote and hostile environments. They are qualified to give immediate lifesaving care and administer various medications and effective pain relief in order to stabilise casualties for protracted rescues.

A large part of our work is providing rescue and medical cover to local community events such as the Bodmin 10 Tors event, The Bodmin Beast Marathon, the Eden Marathon and many others. Many of these events would not be able to operate without the support from ECSRT.

The annual budget for the team is approximately £25,000, all of which is raised from voluntary donations and grants.

Donations can be made via the teams website: www.eastcornwallsrt.org.uk

Or via their Givey fundraising page: <https://www.givey.com/eastcornwallsrt>

Further information or enquiries to the Teams Public Engagement Officer;

Mike Eslick

078 1784 1261

public_engagement@eastcornwallsrt.org.uk

PAUL ALLEN

PAINTER & DECORATOR
45 years + Experience

City & Guilds Advanced Qualification

Internal & external work
All paint finishes
All types wallpapering
Minor repairs undertaken



Fully insured
No job too small or too large
Quality assured & guaranteed

I provide a professional
service at a reasonable cost

Please contact me for a free estimate

Mobile: 07548 941437



Spinach and Feta Pie

5 eggs
100grams pecan nuts
300 grams feta cheese
50 grams grated cheddar cheese
Zest of 1 lemon
Pinch of dried mixed herbs

Mix all above ingredients together.

200 grams washed and shredded spinach
Butter
Olive oil
Salt, pepper and cayenne pepper
Grated nutmeg
1 packet of filo pastry



Heat a knob of butter and wilt the spinach in a saucepan
Brush a oven proof dish with oil and line with a sheet of filo, repeat twice more with the pastry hanging over the side of the dish.
Mix the spinach into the egg mix and pour into the dish.
Season well, cover with a sheet of filo over the top, brush again with oil before putting another sheet on top, bringing the overhanging pastry over and let it all fall loosely and brush with oil again
Cook at 200C for about 40 mins. Serve hot or cold

Recipe supplied by Sharon Clemens

LET US PLAN YOUR NEXT GET TOGETHER

Cliffords at

HORIZON

OPEN DAILY FROM 9AM FOR FRESH BREAKFASTS
AND BEAUTIFUL LUNCHES

WE CATER FOR A RANGE OF EVENTS

WE CAN
PROVIDE
FOOD AND
DRINK



WE DO
WEDDINGS

100 SEATER
FUNCTION
ROOM



HORIZON FARM SHOP, TREMAR, PL14 6EA

P: 01579 577070

FB: CLIFFORD'S AT HORIZON FARM SHOP



What is Messy Church St Keyne?

Messy Church is **a form of church for all the family, both children and adults that involves, creativity, celebration and hospitality.** "It is Church, but not as you know it". You will be warmly welcomed. It is Christ-centred and helps people to encounter and enter into a transforming relationship with Jesus.

There will be opportunities to be creative through themed art and craft activities, games, songs, a Bible story, refreshments and a shared meal. Attendance is free but donations are gratefully received.

Where is it happening?

Messy Church takes place usually 6 times a year in **St Keyne village hall** or Jubilee Park (summer months) on a Wednesday afternoon during the school holiday periods throughout the year. It is run and organised by members of the parish church in St Keyne.

When is it happening?

The next Messy Church sessions of 2024 will take place on

Wednesday 14th August 2024 and Wednesday the 30th of October from 3-5pm.

Look out for the banner nearer the time outside the village hall.

For more information please contact: Lambrini Featherston
Tel: 07919 460380
Email: lambrinifeatherston@gmail.com



R Wills

Carpentry and Joinery

Qualified and Insured

All aspects of carpentry and
property maintenance

07850546557

r.wills140@gmail.com

@RWillscarpentryandjoinery on Facebook

Pol Community Care Ltd

We are a locally based company in East Cornwall, covering Looe,
Liskeard, Saltash and surrounding areas.

Pol Community Care are looking for friendly and reliable team
members.

If you want to make a difference in someones life come join our team.
No experience necessary as full training is provided.



Because The Little Things Matter

Contact us:

- Facebook: PolDomCare
- Enquiries@polcommunitycare.com
- Tel: 01579 559690
- www.polcommunitycare.org



St Keyne Big Breakfast



Our Big Breakfasts (or lunch or brunch) are held in the Village Hall every two months, usually on the 2nd Saturday, from 10.30am to 1pm and the next one will be on 3rd August. All the food is freshly cooked during the morning and the cost for the hot meal includes as much toast, tea, coffee and fruit juice as you want. Please just ask if you would prefer vegetarian sausages and be

assured that all the individual items are cooked separately. We have recently

included mushrooms on the menu as they were such a success earlier this year. The full breakfast costs just £7 (small £4) but we will negotiate the price for smaller or bigger plates if required.

We have regular visitors from around the area - from Liskeard and Looe and local villages - as well as from our immediate community. All the profits from each event are passed on to the Village Hall Management Committee to maintain and improve the facility which is so important to the St Keyne community.

We hope you will be able to join us very soon – future Big Breakfast dates this year are

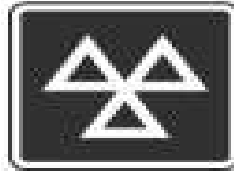
3rd August, 5th October and 7th December from

10.30am to 1pm

Sally Lewis

C & D Builders

Conor - 07964701111 Dave - 07734 183205



STATION MOT LISKEARD

Unit 8, Miller Business Park
Station Road, Liskeard PL14 4DA

CLASS IV & VII MOT'S
Evening and Saturday possible
Please enquire



stationmot@outlook.com

01579 228607 

The WI in Duloe

Last year one of our WI members was diagnosed with breast cancer, thankfully she was successfully treated.

Breast cancer awareness month is in August and there is going to a coffee morning for Breast cancer UK.

Details are as follows:

Friday 9th August 10am - 12pm at Dobwalls church hall.

All money raised will go to Breast Cancer Now Charity.

One person every 10 minutes is diagnosed with breast cancer every day so an excellent charity to support.



Future dates:

Childrens Hospice South West on Thursday 5th September
Surfers against Sewage Thursday 3rd October

If you would like to try us or join us, please come along or contact:

Sharon 01579 343434 or Gill 01579 349183



August Informer deadlines
All adverts and articles to be submitted by
FRIDAY 18TH OCTOBER 2024!
Email: Informer@stkeynetrewidlandpc.org.uk

Next publication date
Saturday 2nd November 2024



Charlotte Louise Nails Liskeard

Check out my social media
for the latest promotions
and inspiration

07 435 706 183

charlottelouisenails@hotmail.com



[@charlotte.louise.nails](https://www.instagram.com/charlotte.louise.nails)



[@Charlotte Louise Nails](https://www.facebook.com/CharlotteLouiseNails)

10% discount when using
code NLT10
Book Now via this QR code





英国和道連盟

The British Wado Federation

LEARN KARATE JU JITSU

*Self-Defence Art of the Samurai Warrior
Traditional Wado Ryu & Kobudo*



Thursdays: Trewidland Village Hall, PL14 4ST
6.45 pm – 8 pm

Contact: trevorwickett@hotmail.com
0748 578 4486 or 01503 240421



Great Ideas for Bathroom Design

- Wall & Floor Tiles for all Applications
- Exclusive designs direct from Italy
- Unique Bath & Wet Room Design
- Large Format sizes from 30 x 60 to 120 x 2400 cm
- Over 40 years of Expertise in Tile and Bathroom Design
- Two Specialist Showrooms in Cornwall
- Fully fitted Bath & Wet Room showroom in Plymouth



Italian Design Bathroom Ideas

CORNWALL TILE CENTRE

Extensive Tile & Bathroom Showrooms in Pensilva & Wadebridge

Open to Trade & Retail

Please call to make an appointment

Pensilva showroom:
01579 362264

Wadebridge showroom:
01208 813344

info@cornwalltile.com

www.cornwalltile.com



EXCLUSIVE
HANDMADE ITALIAN
TILES IMPORTED
DIRECTLY INTO
CORNWALL



Exclusive 'NEW' Outdoor Design Collection

Come to our MacMillan Coffee morning

**WE ARE
MACMILLAN.
CANCER SUPPORT**



**On 25th September
from
10am to 12 o'clock**

St Keyne Village Hall

**There will be cakes
and a raffle**

For more details please
contact Jean on 01579
342389

Approachable and Friendly Bookkeeping Services



Monthly Bookkeeping



Invoicing



VAT returns



Self Assessment Tax Returns



Capital Gains Returns



Monthly Reporting

*Scan QR code to
discover more*



Why not book in for a friendly chat to see how we
can help you?
01579 683624

penny@pmbbookkeepingandmore.co.uk

CORNWALL COUNCILLOR JANE PASCOE

LISKEARD SOUTH AND DOBWALLS

Recently, I was pleased to join with the Chairman of the Parish Council, the Clerk, Councillors, and residents for a defibrillator training session in St Keyne Village Hall. I came away feeling I would be able to save a life. The instructor told us how important it is to get as many people as possible including young people trained.

Please do

encourage anyone to join a training session, it only took a short time, it was very interesting, and you never know when you will be able to help someone survive a medical emergency.

Last week I was honoured to be re-elected as the Chair of the Cornwall



Council SE Cornwall Community Area Partnership at a meeting in Saltash. The SE Cornwall CAP represents 29 Parishes, both St Keyne and Trewidland are well represented by your Chairman and Clerk at the meeting. It is a platform to share ideas, raise important issues that impact on the Parishes in SE Cornwall . If you have any concerns, you wish to raise please advise your Parish Council. Liskeard is the centre for services for the residents of St Keyne and Trewidland and I am pleased to announce that we have been granted £235,000 form

the Strategic Community Infrastructure Levy (CIL) Fund towards progressing the projects for expansion to the Rosedean GP Surgery and a bus interchange in the Cattle Market site. The CIL Fund is from developers across Cornwall and allocated to projects to deliver local infrastructure.

Cllr Armand Toms and I continue to campaign for safety improvements on the A38 and abolition of the Tolls on the Tamar Bridge. I will continue to ask for the collection of Household DIY Waste to be resumed at Connon Bridge HWRC. I hope that you all enjoy a glorious summertime with your family and friends and you can support the local events.

Cornwall Councillor Jane Pascoe
Liskeard South and Dobwalls.



The wildlife friendly garden

Wasps we hate them

Or do we?!



Most of us run screaming to the hills when a wasp appears near us, August seems to be the month when we most notice these misunderstood insects. The most commonly identify wasps are the social wasps, who buzz around our barbecues seeking out sticky substances, but this is just a

tiny fraction of overall wasp diversity, estimated at more than 7,000 species in the UK alone. Most wasps are solitary, some are tiny (a few species practically microscopic), never bother us and virtually all are overlooked.

Social wasps play a vital ecological role, as predators controlling the numbers of potential pests like greenfly and many caterpillars and protecting our crops and our gardens. But wasps are also now increasingly understood to be valuable pollinators, transferring pollen as they visit flowers to drink nectar. In fact, many species of orchids are entirely reliant on wasps for pollination! Without wasps, the world could be overrun with spiders and insects. Each summer, social wasps in the UK capture an estimated 14 million kilogrammes of insect prey, such as caterpillars and greenfly. Rather than being a pest, these important insects are a gardener's friend. Wasps are generally apex predators - so if they're not doing well, it indicates that there is something wrong with the world.

It is that thirst for sweet liquids that might help to explain why they become so bothersome at this time of year. By late August, wasp nests have very large numbers of workers but they have stopped raising any larvae. All the time nests have larvae, the workers must collect protein, which accounts for all those invertebrates they hunt in our gardens. The larvae are able to convert their protein-rich diet into carbohydrates that they secrete as a sugary droplet to feed the adults.

With no larvae, all those adult wasps must find other sources of sugar – hence why they are so attracted to our sugar-rich foods and drinks. Spare a thought to those worker wasps when they have a sip of your drink, as they are about to die off during the colder month. Only recently emerged females hibernate to start the cycle of life all over again the following spring.

Village Contacts

PARISH COUNCIL

Chair	Kevin Shovelton	07471816604
Clerk	John Hesketh	01579 342437
E-mail	clerk@stkeynetrewidlandpc.org.uk	
Parish Council website	www.stkeynetrewidlandpc.org.uk	
	 www.facebook.com/profile.php?id=61551321479150	

Cornwall Councillor	J. Pascoe	cllr.jane.pascoe@cornwall.gov.uk
Cornwall Councillor	A. Toms	cllr.armand.toms@cornwall.gov.uk

INFORMER

E-mail	informer@stkeynetrewidlandpc.org.uk
--------	--

ST KEYNE VILLAGE HALL

Chair	Peter Higgs	01579 340783 See email in
Secretary	Dominic Folland	article
Treasurer	Stuart Houghton	01579 347221
Bookings	Leigh Ann Latham	Via FB page
Website	www.stkeynevillagehallandclub.org.uk www.facebook.com/stkeynevillagehall	

TREWIDLAND VILLAGE HALL

Chair	Steve Bowers	
Treasurer	Nicky Fairey	07765 846658
Bookings	nicky_fairey@hotmail.com	
Website	www.trewidlandhall.wixsite.com www.facebook.com/	

