

St Keyne & Trewidland Informer



**No 11
May 2026**

Trewidland Village Hall

www.trewidlandhall.wixsite.com



Well, I can't believe it's now April and I'm at the start of my second cold of the year. It's my own fault though, for feeling smug when everyone else told me of their winter ills and I recounted the fact that I hadn't had a cold for years!! I've learned my lesson now and will be keeping schtum. I hope you are well and enjoying the brightness and colours that Spring

provides.

Since we last spoke, the new TVH Rebuild Committee has been busy working on a strategy to reapply for planning permission and thereby gain quotes for our new hall. We have achieved the full support of St. Keyne and Trewidland Parish Council who have granted us money to aid the application processes, and we shall be instructing an architect who has very kindly agreed to work for us at highly reduced fees to support a local community venture.

As Events Co-ordinator, I have tried to increase the number of events we currently hold in the hall to involve more residents of Trewidland and our wider community. On this note if you have an idea for an event that is not currently being held please do let us know and we will be delighted to give it a go. We are looking into Musical Bingo and even Pig Racing (not real ones I hasten to add) for future dates. Since the last TVH update we have managed to raise over £1,000 from our Curry Night, Quiz, Pub and Games Night and Breakfast Time and over £100 from the Crafts and Laughs afternoons. The latter are held on the last Wednesday of the month from 2.30pm and so far, we have made Christmas Wreaths, played with and painted our clay pieces and at the last session Tracey Attfield from Attfield Arts & Crafts introduced us to needle felting. Most of those who come would agree that they are not very creative, but enjoy the company of like-minded, friendly people. It's not really about the make, but the process and the company. Do come and join us if you'd like to make some new friends or reconnect with some old ones.

After the huge success of our first Breakfast Time in February, we hope you were able to join us on Saturday April 28th for our second one. We received so many positive comments afterwards on the quality of the food, welcoming layout and friendly atmosphere. We even had to get more chairs out! Saturday May 2nd we are holding a Second-hand Sale so if you've been having a Spring clear-out and want to have a table for £10 and/or a rail for £5 do let me know and you can join the other sellers. Perhaps you'd like to pop along and grab a bargain for yourself. On

Sunday 10th May Trewidland History Group will be holding a Cream Tea and Memories from 2.30pm to 5.00pm. Have you ever wondered what to do with those old photographs and house deeds, you found in the attic, who lived in your house before you and your family arrived, or when Trewidland became a village and why it is located where it is now? Find out about all the answers, meet new friends, and share many more local stories while enjoying a delicious homemade cream tea. At the end of May, on the 23rd, we will be holding our ever-popular Village Quiz. Come and join a team or bring your own.

Should you fancy a day out Trewidland's Steel Band, Pantastic, will be performing on the platt in Port Isaac on June 28th weather permitting. We shall be raising money for the hall rebuild, charity number 300640. The village hall now has gift aid status so if you support one of our events in the future, please do fill in one of our forms to help us gain an extra 25% from your donations.

Easyfundraising is a great way to support us if you haven't tried it already. At present we have £326.12 raised by those who have joined the scheme. This is all free money which is incredible.

This year Trewidland Summer Fayre is on Sunday July 5th from 11am to 4pm. This was so well supported last year, and we received many positive comments. We shall be serving roast pork baps, homemade cakes, and tea in the hall this year. There will be many more craft stalls and games to play, including the extremely popular Human Fruit Machine, as well as a Dog Show, weather permitting. Dreamy Ice Creamy will be returning to serve ice cream too. Competitions for those who would like to take part include: Your Garden in Vase (a vase of flowers from your garden), Garden Design (children only – a garden on a tea tray – any medium), Victoria Sponge, 3 Fruit Scones, 3 Cheese Scones, The Funniest Shaped Homegrown Vegetable. The Garden entries and vegetables will be judged by you, but the food will be judged by a former Chef.

Finally, thank you for the increasing numbers of followers on the Trewidland Village Facebook page. The website is also being updated regularly (as do the noticeboards in the village) so keep an eye out for news of past, current and future events.

Thank you also to the increasing numbers of people from the village and wider community who have been coming to the events. If you would like to help with the Fayre do get in touch, you will be very welcome. Hopefully see you at one of our events very soon.

Nicky Fairey
TVH Secretary
Nicky_fairey@hotmail.com



PHOENIX

PLUMBING & HEATING

- ▶ Gas & Oil Engineer
- ▶ Plumbing & Heating
- ▶ Installation & Servicing
- ▶ Mains Pressure Cylinders

Call Gary: 0774 384 6972
email: phoenixplumbingsw@gmail.com

Annual Cream Tea in St Keyne,

to raise funds for St Keyne Church

Sunday 21st June at 14.30h

Come and join us in the garden of Cross Park, for homemade scones, a raffle, a quiz and lots of friendly chatter in the sunshine.

If the weather is not so good the event will be held in St Keyne Church



Village Quiz

23rd May 7pm

Trewidland Village Hall

*Come in a team
or join one on the night*
£2.50 per person

QUIZ!

All Welcome!
B.Y.O.B.

Fresh Eggs at The Snug

Thank you so much for supporting us so far – we really appreciate it! ♥

We're excited to share that we've upgraded our egg stand, making it even better for you to pop by and pick up your eggs.

Our hens are happy and thriving, and you might soon spot some beautiful rainbow eggs appearing – keep an eye out! ♥

Only £1 for half a dozen eggs (subject to availability – our happy hens lay at their own pace!)

- Leave payment in the box
- Return empty egg boxes if you can

📍 The Snug, Landloo Bridge, PL14 4RT

Thanks again for your continued support!





Church News

Dear Friends

Now spring has sprung, we are looking forward to the summer months, in particular, we are looking forward to summer cream teas in June. A huge thanks to Sharon and Sally for making this possible, and it was a real joy to be at it

last year. We have had a great Easter, sharing in the joy of Christ's resurrection, and the joy is that we stay in this season of Easter until Pentecost Sunday on Sunday, 24th July. Through the end of April and May, we shall be doing a giving series at Church as we look at how we give our time, gifts, finances, and prayers. On Sunday, 17th May, two exciting things will be happening. Firstly, we shall have our gift Sunday where we will have time to offer our time, gifts and finances to the work of the Church, so please do come along and see how you can be part of our community and growing the Church in the coming year. Then at 11 am we shall have our annual meeting where we will take some time to stop and look back on the past year and also elect those who will serve as Church Wardens and PCC members, so do come along.

We continue to develop our work in the community, as our fantastic messy Church team has shared about offering this worship community more. Come and join us in May, to develop our work in the Hall and grow our relationship and opportunities of serving together at the school. We are so proud of the great work of the School and the fantastic Ofsted in early spring. Rev Mark is enjoying his role as a governor and working with the school.

As we look forward together, I am drawn to those words that Jesus said.

12 Again Jesus spoke to them, saying, "I am the light of the world. Whoever follows me will not walk in darkness, but will have the light of life."

John 8;12

As the days become lighter, but we also know of the darkness of the world, I am reminded of the great hope and light we have in Jesus. Something we celebrated at Easter and continue to celebrate daily. We look forward to serving and connecting together in the coming months.

God Bless

Rev Mark and St Keyne Church

Obituary: Loveday Carlyon

(1948–2025)

Loveday Carlyon, a dedicated teacher, passionate campaigner, and prominent figure in Cornwall's cultural and political life, passed away on 2 December 2025 at the age of 77.

Born Kathleen Loveday Hoare in Redruth, she was raised across Cornwall, including in Torpoint, where her father served as a local policeman. Inspired by her mother's career in education, she attended Saltash Grammar School before training as a teacher at Rolle College. She remained committed to education throughout her life, later earning a Master's degree in Special Needs Education.

In 1970, she married Geoff Moore, with whom she had two daughters, Kerenza and Tamsyn. Following their separation in the early 1980s, she adopted the surname Carlyon from a family connection. She later married artist Julyan Holmes, sharing with him a deep involvement in Cornwall's artistic and cultural revival.

During the 1980s, Loveday became a leading voice in Cornish political and cultural life. As Chair (leader) of Mebyon Kernow from 1986 to 1989, she was known as a formidable and outspoken advocate for Cornwall's identity, autonomy, and social justice. She campaigned vigorously against overdevelopment and mass tourism, warning against the risk of Cornwall becoming a "theme park" driven by short-term economic gain. Her commitment to preserving Cornish heritage was especially evident in her successful campaign, as a member of Liskeard Town Council, to retain the Cornish language on local "welcome" signs. This effort led to wider recognition of Cornish in public signage and remains one of her most enduring achievements.

Loveday was also deeply involved in local governance. After moving to St Keyne in 1992 with her husband, she served for many years on St Keyne Parish Council, including a term as Chair. Among her contributions was helping secure land for local children to play—an achievement she regarded with particular pride.

In later life, she faced significant personal challenges, including caring for her husband following a severe head injury in 1997, and later coping with his passing. Despite declining health in recent years, she remained a respected and much-loved member of her community.

Loveday will be remembered for her unwavering commitment to Cornwall's traditions, language, and people, as well as her quiet but lasting contributions to local life. Her life was celebrated in a service attended by family and friends, overlooking the Cornish countryside she loved, with traditional Cornish songs sung in her memory.

She is survived by her daughters, Kerenza and Tamsyn, and her grandchildren, Tai, Olivia, Isla, and Merryn.

Close

FRANCIS

• Stone Walling & Patios Ltd •

**Traditional and contemporary
works undertaken**

For a quotation please contact us

01822 458073 • 

www.jafrancisstonewalling.co.uk

City & Guilds  QUALIFIED

Advertising costs to
cover
4 issues

Black and white
1/4 page £15.00;
1/2 page £30.00;
Full page £45.00
Full page 1 issue
£25.00;

1/2 page 1 issue £20
For coloured ads please
enquire for price

Inform-er@stkeynetrewidlandpc.org.uk



**Keltic
Kymber**
DOG TRAINING

**Reward based dog
trainer**

GROUP CLASSES

Held in Trewidland Village hall

1 to 1 sessions

**Dog Training College
Pet First Aid workshops**



CONTACT US

Email:

info@keltickymberdogtraining.com

WhatsApp 07838872311

St Keyne Garden Club



Spring is here at last heralded by the beautiful daffodils around the Village followed by lovely wild flowers and now the planters provided by the Parish

Council are adding to the colours we can enjoy, the herbs we can taste and the promise of fruit from the trees in the play park.

Are you enjoying your garden? Do you grab a coffee and watch the bees and insects on the dandelions on your patch of grass? Or are you busy planting seeds, potting on seedlings and waiting for the last of the frost, visiting garden centres for yet more flowers and vegetables?

Why not join our group?

We meet on the 3rd Thursday of the month at 7.30pm in St Keyne Village Hall. Membership is just £7.50 for the year. We often have Inspiring and knowledgeable speakers who are a pleasure to listen to as well as trips out in the summer. We have a raffle and provide refreshments at the end of the evening so there is always time to chat to other members and not always about gardening!

Our next meeting is on Thursday 21st May at 7.30pm in the Village Hall when Alisha Brown will be telling us all about Terrarium Planting.

Why not come and join us?

Please don't forget – Plant Sale – Saturday 23rd May

At the Village Hall from 10am to 12noon, providing a good selection of annual bedding and perennial plants, all at reasonable prices and many of them grown in members gardens. There will be tea, coffee and homemade cakes as well!

Sally Lewis



Cornwall Councillor Jane Pascoe

I wish to acknowledge that we are so lucky to have so many kind people in the village who volunteer their time graciously to St Keyne and help make this a friendly community.

There are many activities and events that need to be organised, advertised, risk assessed, so that we can just turn up and enjoy and it is hard work.

The village Hall Big Breakfast event was well attended and my grateful thanks to the kind volunteers who give up their time to serve us a delicious breakfast. It has been a popular event for many years and I wish the new team every success and also thank the previous team for spoiling us for so many years.

The wettest winter and the problems it created has passed through and I welcome the light mornings and evenings to walk around the village.

Thank you to the village Green Team who have placed the lovely flower tubs and troughs around the village. The Cornwall Council Community Chest contributed towards them, and remember if your group has a project you can also contact me to apply to the fund.

Another year has passed by for the Parish Council and as they approach their AGM we should reflect on how they represent our best interests at every meeting. The Councillors are all volunteers, they attend meetings and sometimes have to make difficult decisions. I thank them and acknowledge how important their work is in representing St Keyne in the strategic plan for Cornwall.

We do not have a village shop, but in our neighbouring village of Duloe they have a community shop, run by more great volunteers. The shop premises include a Post Office, and now that the last bank has deserted Liskeard, Duloe PO will be valuable to the villages, they do need our support to continue.

I attended the recent Safe 38 meeting and now the safety measures on the A38 are in place it is evident we have a safer road, but slower journey times. The new pelican pedestrian crossing in Tideford will soon be in place and we may initially expect tail backs to Trerulefoot in the peak times. The Safe 38 campaign is ongoing to bypass the villages or dual the A38. The volunteer committee are looking for continued support and donations to ramp up the campaign. Residents can get details online.

Many complaints have been received about the number of people caught

speeding on cameras at Landrake, but if they adjust their speed there is not a problem.

I attended the launch of the new soft play equipment at the GLL Leisure Centre in Liskeard. This is an activity that Mums have been asking for and the little people will have great fun in there. GLL and Cornwall Council have invested hugely to regenerate the centre. The many activities that they offer are varied and of a high standard and you will be sure of a warm welcome.

I wish you, your families and friends a lovely summertime in Cornwall. I hope you will find time to support all the voluntary organisations who are busy preparing events for us to enjoy.

Finally, I take this opportunity to wish our Cornwall Young Farmers every success at the National Finals Entertainment Competition with their excellent Cabaret Performance at the end of April.

Cornwall Councillor Jane Pascoe.
Liskeard South and Dobwalls.
Cllr.jane.pascoe@cornwall.gov.uk



— PENHALE —
PANTRY
— LOCAL PRODUCE OUTLET —

LOCAL PRODUCE. SHOP. CAFE. FARM

Dobwalls, Liskeard, PL14 4LT

Opening Hours

Weds - Sun 10am - 4pm / Fri 9am - 4pm



Wednesday Coffee Mornings in St Keyne Village Hall

The weekly Wednesday Coffee Mornings provide an opportunity to meet others in your community and is held in the Village Hall from 10.30am to 12 noon.

If you are new to the village or have lived here for some time, please come along and join us, meet your neighbours and have a chat about anything and everything! A range of coffees are available from the Hall's machine and hot water to make your own tea if required all for the price of £1. Note: we also ask for a small donation to cover expenses.



Tracey Mustoe, a podiatrist, visits every 6 weeks during the Coffee Morning and takes bookings to see her privately in the bar area. Her next visit is on Wednesday 29th April.

We also have regular visits from our local Police Community Support Officer, Steve Edser, who invites you to discuss any issues or queries regarding matters that might be of concern to you or the area you live in. He is happy to arrange a private meeting if that is needed or appropriate.

We would be so pleased to see you any Wednesday.

Sally Lewis



What is Messy Church St Keyne?

Messy Church is a form of church for all the family, both children and adults that involves, creativity, celebration and hospitality.

"It is Church, but not as you know it". You will be warmly welcomed.

It is Christ-centred and helps people to encounter and enter into a transforming relationship with Jesus.

There will be opportunities to be creative through themed art and craft activities, games, songs, a Bible story, refreshments and a shared meal. Attendance is free but donations are gratefully received.

Where is it happening?

Messy Church usually takes place in the Village Hall. In the summer months weather permitting Messy Church sessions takes place outdoors in Jubilee Park situated below Valley View housing estate.

When is it happening?

This year we are planning to increase the overall number of sessions from 6 to 9.

The first four Messy Church sessions of 2026 will take place on the following dates:

**Wednesday 27th May in the Village Hall from 3-5pm
(Half Term Week).**

Look out for the banner nearer the time outside the village hall.

For more information please contact:

Lambrini Featherston

Tel: 07919 460380. Email: lambrinifeatherston@gmail.com

Can you speak Cornish?

Dydh da!

Earlier this year in January, the Cornish language was officially recognised under Part III of the European Charter for Regional or Minority Languages. This means that 'Kernewek' enjoys the same level of promotion as all the other Celtic languages recognised across the British Isles, including Welsh Manx and Gaelic. The recognition is the culmination of many years of work by Cornwall Council, MPs, community groups and cultural organisations to ensure the language plays a key role in life in Cornwall.

Now – what is your parish council doing to support this? not going 'full-on' Gorsedh Kernow, but incorporating some aspects of Cornish culture into our work to keep this 1500 year old language alive, and using Kernowek supports Cornwall's status as a distinct Celtic nation. It reinforces a sense of place and pride for residents

At their last public meeting in March, councillors agreed that we should start to incorporate some Cornish language words into our published documents and communications. This doesn't mean the wholesale translation of pieces of text but rather the inclusion of Cornish words alongside the English. At its simplest, this would be greetings and sign-off in council emails, signatures and answering machines, titles in council documents (agendas, minutes), name badges . . . simple everyday items that don't intrude but offer a gentle reminder about our shared cultural heritage.

What do you make of the idea? We'd love to know, especially from anyone who's actually learning (or speaks) the language. Our email address is English only (clerk@stkeyneandtrewidlandparish.gov.uk) but our thanks are purely Cornish!

Meur ras hag oll an gwella!

John Hesketh

Our Little Walk To Looe Island

Have you ever wondered what goes on on Looe Island (St George's Island)? I have and when Debbie (my friend/neighbour in St Keyne) contacted me asking if I had ever walked across to the island and did I want to, I jumped at the chance which happened to be the next day!! It is only possible to walk across at very low Spring tides, which occur around March and September. We discussed the route, time and what to wear. Wetsuit, no wetsuit, shoes, no shoes, wading stick, no wading stick. We didn't really know, so you can understand our excited and nervous thoughts of walking across to the island and being stuck in the middle. But we were determined and the weather looked perfect. With the help of previous walks noted on Facebook and Google we made a plan.



So on Wednesday 4th March we headed to Hannafore expecting more people to be keen to do the same, but being a week day I'm thinking people would most probably be at work or maybe not as crazy as us.



We set off from the concreted pipeline up near Hannafore Kiosk. The water was crystal clear and lots of sea life to investigate, but we couldn't really hang about because we were governed by the tide times.

We needed to set off about an hour before low tide, allow 45 minutes to get over to the island and head straight back as the tide would be turning. There were a few oooooo's, lots of aaaahhhh's and quite a lot of eeeeeeking when sea weed decided to wrap around our ankles and the sand beneath our feet dipped making us waist/chest deep in water. But we never stopped smiling and laughing. It was a great experience. Just stopping and

looking back at Hannafore and Looe to see how far out we were was surreal. We landed on the rocks at Looe Island and took videos and photos. You're not allowed to step onto the island unless you're with a guided tour or staying in the cottage or bell tent. We noticed two people watching us high up on the island possibly knowing people would be walking across. I now know they were Claire and Jon who are the wardens that live there year round to protect the island's wildlife. So we took in the scenery and headed back, both excited and amazed at our achievement. Little did we know, as we were about to land at Hannafore, a gentleman had been checking on us and watching us walk across and back. He was interested to chat about our experience. He had never done it, but was very knowledgeable about the sea and tides.



We are checking on dates for the next very low tide and would love to do it again, but this time we'll listen to Debbie and head more to the left, as we're heading out, where you could see more ripples suggesting the water was shallower.

Although it was fun and we did have a laugh, we were also aware of the dangers. The weather was ideal, warm and very light winds. If we had any doubts and started to feel unsafe we were happy and ready to turn back.

Hot chocolate and cake from Hannafore Kiosk finished off a lovely few hours with a crazy lady in the sun.

Debbie and Belinda, St Keyne.



St Keyne and Trewidland Parish Council News

Cll Sarah Whiting Chair-
chair@stkeyneandtrewidlandparish.gov.uk

A Quick Update on Recent Parish Activities

The Green Team has been busy as usual. Trees have now been planted in Jubilee Park and at Trewidland School. Patricia has also organised planters and plants, which are now located in various places around St Keyne. If anyone has ideas for additional locations where we could plant flowers or place more planters around Trewidland, we would be very happy to hear your suggestions. We are pleased to share that we have been able to support Trewidland Village Hall with the cost of their application to build a new village hall. This is an exciting and ambitious project, and one we are keen to be involved in.

Over the past few months, we have also considered a number of planning applications.

Councillor Jane Pascoe organised a question-and-answer meeting with Robert Lacey from Cornwall Council regarding the proposed development site next to Jubilee Park. The meeting was very well attended and clearly reflected strong local interest. We hope everyone received the answers they were looking for.

As you may have noticed on your council tax statements, the Parish Council has increased its precept by just 0.6%. This is very low compared to other parishes, as we remain mindful of the rising cost of living.

To help reduce costs further, the Parish Council is now managing payroll in-house, saving on accountancy fees. Additionally, the laptop used at public meetings was kindly donated, meaning no extra expense.

We are also awaiting the outcome of a funding application for speed awareness flashing lights—watch this space.

Finally, the Parish Council has decided to incorporate some Cornish language into our reports. So here goes:

“Dew oberen wag a-wra ni gwitha hwath.”

This roughly translates to: **“We still have two vacancies on the Parish Council.”**

If you are interested in getting involved, we would love to hear from you.



Duloe Community Shop and Post Office

As a community shop, we like to support local suppliers where we can, offering a selection of bread, milk, eggs, meat, cakes and pasties, many of which are not available in the supermarkets. If you would like to order anything in particular from Barnecutt or Blakes please ask.

We keep our prices as low as possible for the community. As a small shop we cannot compete with some supermarket prices because we do not have their economies of scale. However, we do offer local access, saving both time and petrol along with free parking onsite. The shop provides a friendly and welcoming environment, and we are looking for volunteers who would like to be part of the team. If you would like to find out more about joining us, please pop into the shop or call us on 01503 – 265592.

With many local banks closed or closing, why not make use of our on-site Post Office, where you can withdraw/deposit cash, make Balance enquiries, pay some bills, top up gas and electric, purchase stamps, gift cards and we are also a local collect for Amazon and Royal Mail.

Our current opening hours for the shop are:

- Monday – Friday 8.00am – 1.00pm – 2.00pm – 5.00pm
- Saturday – 8.00am – 1.00pm
- Sunday – 9.00am – 12.00

Post Office hours:

- Monday – Friday 8.00am – 1.00pm – 2.00pm – 4.30pm
- Saturday - 8.00am – 12.30pm
- Sunday – Closed

As part of running your Community Shop, we annually review the business to plan for the coming year and feel that now is a good time to engage with the local community to hear your thoughts on what Duloe Community shop could offer. Please contact us via duloecs@outlook.com.

Thank you to our customers and volunteers who continue to support the shop which enables it to serve the community.

THE BRENCH WOODCARVING CLUB

The Brench Wood Carving Club members were originally part of the Adult Education System at Bodmin School, but as the school had to close during the Covid epidemic, the attendees looked for a suitable venue to continue their hobby.

St Keyne Village Hall was chosen as a suitable venue.

The Club is named as a memory of Danny Brench, the tutor at the Bodmin evening classes, who sadly passed away in 2012.



The Club was formed as a self-help group organised by Allison Houghton who began woodcarving at Bodmin after forced retirement due to ill health. After the first lesson she realised it was something that she had taken to, and since then has learnt several aspects and techniques, her favourite being lettering and house signs. She has completed commissions for remembrance benches for The National Trust and inscriptions and an entrance door, in several local churches



Apart from being a creative pastime the Club is a friendly environment; most members have started with no experience, but, with the self-help aspect of the club they have become accomplished carvers.





Some projects completed at the Club
Fairy Houses – Griff from Trewidland
Celtic Cross – Dave Taylor from St Keyne
Oak Leaves – Ann Wolf from st Keyne
Tribal Mask & Dancers – Katie Jackson-
Turner. - Trewidland

Anyone over the age of 18 years is invited to come to the Club on a Tuesday afternoon between 1400 and 1600 to have a go. The Club has all equipment needed, tools, books and wood, for new attendees to get started, and with the guidance and help that is available you will be surprised at the outcome of your first project.



The first session is free then it costs £4 per week. Tea and cake are available at halftime of each session.

Our next report will be an interview with Andy Zenonos, a talented craftsman who helps the carvers to design and execute their projects. He has an amazing story to tell.
Allison Houghton



The Green Team

Over the past few months, we've been Incredibly busy!

We're delighted to share that the community orchard in Jubilee Park is now complete. A variety of fruit trees have been planted for everyone to enjoy—once they've had a little time to mature and begin bearing fruit. We also planted 4 fruit trees in Trewidland School with the help of pupils.

We've also successfully secured small grants to install new planters, which you'll now see dotted around the village of St Keyne.

A big thank you goes to Councillor Jane Pascoe for generously funding three of the planters through her community treasure chest, and to St Keyne and Trewidland Parish Council for funding

the remaining three.

We're also very grateful to the many volunteers who helped plant and position the containers. It was wonderful to see people of all ages coming together and taking pride in making the village a more colourful and welcoming place.

Looking ahead, we've already started sowing seeds to grow more plants for the planters once the spring display comes to an end. These include Cosmos, Lupins, and Sweet Peas.

As you pass by the planters, please keep an eye out for dry soil or spent flowers. They may occasionally need a little water, and removing



dead flowerheads will help keep them looking their best. We hope you're enjoying the displays!

The Green Team has plenty of ideas for the future. Our goal is to support insects, wildlife, and biodiversity, while also enhancing the wellbeing of our community.

If you'd like to get involved, please email Martin Cluer at martin.cluer@stkeyneandtrewidlandparish.gov.uk

Finally, from 4–10 May 2026, it's National Hedgerow Week. To celebrate, The Tree Council is offering free resources to help you engage and take part in a variety of activities. For more information, email Info@treecouncil.org.uk or visit their website.

Patricia Hopwood



Trewidland Village Hall

SECONDHAND SALE

Tables £10, Rails £5
Optional donation 10% of sales
Raising money for TVH charity number **300640**

Saturday 2nd May
11am-3pm

Contact Nicky Fairey
07764846658
nicky_fairey@hotmail.com



Harvesting Roscun ciorca 1930

Have you ever wondered.....

What to do with those old photographs and house deed you found in the attic?
Who lived in your house before you and your family arrived?
When Trewidland became a village and why it is located where it is now?
Where you can find out about all these, meet new friends and share many more local stories while sharing delicious cream, tea?

Come and join us for



CREAM TEAS AND VILLAGE MEMORIES



Sunday 10th May 2.30 - 5.00pm

Everyone Welcome



What's on

Regular Events

Monday	Weekly	09.30 - 11.30 17.30 - 21.30	Keltic Kymber Dog Training	Trewidland VH
Tuesday	Weekly	11.45 - 12.45	Post Office	Trewidland VH
Tuesday	Weekly	17.30 - 21.30	Keltic Kymber Dog Training	Trewidland VH
Tuesday	Weekly	14.00 - 16.00	Brench Club	St Keyne VH
Wednesday	Weekly	mornings	Jay Dog Training	Trewidland VH
Wednesday	Weekly	10.30 - 12.00	Coffee Morning	St Keyne VH
Wednesday	Last of the month	19.30 onwards	St Keyne History Group	St Keyne VH
Wednesday	Every other week	19.00	Badminton	Trewidland VH
Wednesday	2nd of the month	19.00 onwards	Parish Council meeting	St Keyne VH / Trewidland VH alternate month
Wednesday	Last of the month	14.30 onwards	Crafts and Laughs	Trewidland VH
Thursday	1st of the month	19.30 onwards	WI	Duloe Jubilee Centre
Thursday	Fortnightly starting on	19.00-22.30	South East Cornwall	St Keyne VH
Thursday	3rd of the month	19.30 onwards	Gardening Club	St Keyne VH
Thursday	Weekly	evening	Karate / Ju Jitsu	Trewidland VH
Friday	1st and 3rd of the month	19.00	Table Tennis	Trewidland VH
Friday	Last of each month	20.00-21.30	Pub Theology	St Keyne Social Club St Keyne VH
Saturday	1st of the month		Karate / Ju Jitsu	Trewidland VH

What's on

in and around the parish

2nd May	11.00-15.00	Second-hand Sale	Trewidland VH
10th May	14.30-17.00	Trewidland History Group Cream Tea	Trewidland VH
16th May	19.00 onwards	Curry & Quiz	St Keyne VH
17th May	9.30 11.00	Gift Sunday followed by the Annual Meeting, all welcome	St Keyne Church
23rd May	19.00 onwards	Village Quiz	Trewidland VH
23rd May	10.00-12.00	Plant Sale	St Keyne VH
27th May	15.00-17.00	Messy Church	St Keyne VH
20th June	19.30 onwards	Burgers & Bangers with Disco	St Keyne VH
21st June	14.30	Cross Park (good weather) St Keyne Church (bad weather)	St Keyne
28th June	In Port Issac	Trewidland based Steel Band Pantastic	Port Issac
5th July	11.00-16.00	Trewidland Summer Fair	Trewidland VH
18th July	19.30 onwards	Burgers & Bangers with Disco	St Keyne VH
1st August	10.30-13.00	Big Breakfast	St Keyne VH
29th August	19.30 onwards	Burgers & Bangers with Disco	St Keyne VH
12th Sept	19.30 onwards	Burgers & Bangers with Disco	St Keyne VH
10th Oct	10.30-13.00	Big Breakfast	St Keyne VH
29th Oct	18.00-20.30	Halloween Party	St Keyne VH

Interesting Hobbies

When guns are not so bad.

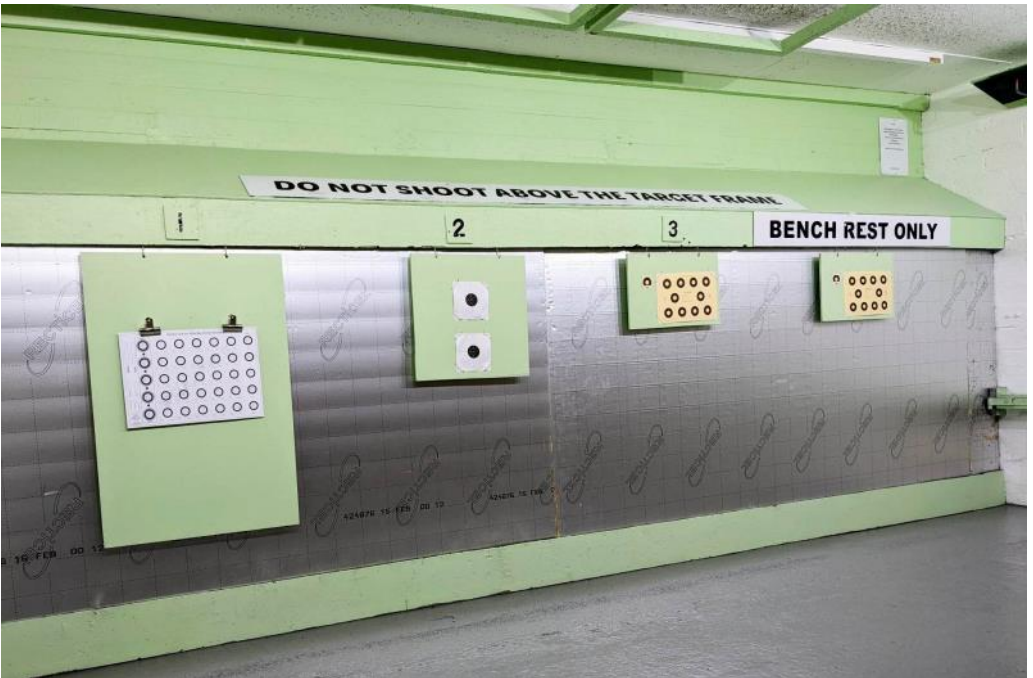
Having read the title I expect there are already a few of you who have put your anti-gun thoughts into action.

It's a sad preconception that guns are only ever used for bad things. I think it's the case that we hear far more about the bad things that happen involving guns than we hear about the positive things.

Whether you approve or not guns are a big part of country living. Many are used for vermin control and many are used for sport, but using a gun very rarely actually means that you are a bad or dangerous person as many would believe.

I am a member of Looe Rifle Club, a shooting club which was formed in 1915 and has been active ever since. We have approximately 100 members, with ages currently ranging from just 8 yrs up to 83 yrs. We have several ex-services personal and members from all walks of life but one thing that they all have in common is that they have all passed a Police check to become a member even the juniors.

Our members are a great variety of people who come to the club for many different reasons. Some people are just looking for a new sport to try, some are looking for friendship, others are looking for something that they can do with family members and some just love guns and are very educated in the history and working of all the different types.





It's one of very few sports where different generations can compete with each other on level grounds. Family rivalry can be great to watch especially throughout competition season . . . who will come out on top this time.

The types of shooting at the club vary from prone (lying down) to benchrest (sitting down) to free standing, so something suitable for most people. As a club we hold our own very well at competition Shooting and the standard seems to be constantly on the rise, so we must be doing something right I guess.

Some members just turn up shoot and leave but many will stay and chat until the end of the session. The time spent in the clubroom is as important to many members as the shooting. The friendships built Between members continues well outside of club and the concern for others who they miss a session is heart warming to see.

We have over the past few years had a few members with terminal illnesses and they have all been determined to keep shooting for as long as possible. When someone walks out of the door saying that coming to the club makes them forget their troubles and feel better it's only then that you realise the real importance of the club.

You will all have your own ideas on guns, some good and some bad, but always remember that there are two sides to every story.

Anita Ivy

ST KEYNE CATERING GROUP

THANK YOU SO MUCH

Our final Big Breakfast in December was a great success and it was lovely to see so many of you who have supported our events in the past and the few who came along for the first time!

All of the profits from the Big Breakfasts have been passed along to the Village Hall Management Committee to help with the costs of running and maintaining the building which is such a valuable asset to our Village and the wider area.

The Catering Group want to say how very much we appreciated your good wishes for the future and also the generous donations and the presents and cards given to us. We intend to use the cash to go towards lunch for us all in the next few weeks.

The Village Hall hopes to arrange a meeting in the near future for the people who have offered to set up a new Big Breakfast group.

Keep an eye on their web page for details.

Thank you all again,

Sally Lewis



TREWIDLAND

SUMMER FAYRE

JULY 5TH 11 TO 4

More details to follow

Save the date!



Family Catering in East Cornwall - You Enjoy, We Do the Work

Looking for reliable, high-quality catering for your event?

We are a friendly family-run catering business with over 10 years' experience, covering Looe and up to 50 miles across Cornwall.

We provide hot or cold food for any occasion, including:

- ◆ Weddings
- ◆ Parties & Celebrations
- ◆ Business Lunches
- ◆ Corporate Events
- ◆ Wakes

Whether you need full catering or simply want us to deliver and set everything up ready to go,

we tailor our service to suit exactly what you need.

Just tell us what you're looking for — we'll take care of the rest.

- ◆ Based near Looe, East Cornwall covering a 50 mile radius
- ◆ Friendly, reliable, stress-free service
- ◆ Call Wendy 07450833077 or Wendyshore4@gmail.com
- ◆ Ambervalleycatering.co.uk
- ◆ Quality food, professionally prepared



St Keyne Village Hall



Welcome to spring at last—with some sunshine appearing just often enough to make it feel a little warmer. The hall has seen a number of changes and small updates over the past few months, as well as welcoming new groups and clubs.

Firstly, some general maintenance has been carried out across the property. New exterior lighting is on the way, and signage is being updated and replaced. You may have already noticed the new car park sign—please ensure vehicles are parked within the marked lines and that space is left for all hall users. This is a private car park, and we appreciate your cooperation.

The kitchen is also receiving an update, with new equipment and community workwear being introduced to improve both efficiency and safety.

We've seen a significant increase in bookings for private functions, with most weekends—including Sundays—now reserved for parties. We're very grateful for this support and look forward to continuing to host these events.

A new catering group has been formed, and the Big Breakfast events have been going very well. The team's growing confidence has led to more dates and events being planned. We hope to see you at our Curry and Quiz Night on 16/05/26—food will be served from 7:00pm, with the quiz starting at 8:45pm.

We're also pleased to introduce a new club starting on 07/05/26: the South East Cornwall Model Club (SECMC). This club is open to anyone interested in miniatures—whether that's model railways, diorama making, or tabletop gaming (such as Warhammer). Meetings will be held fortnightly on Thursdays from 7:00pm to 10:30pm.

We look forward to seeing this club grow alongside our long-standing groups:

- * Brench Woodcarving Club (Tuesdays, 2:00pm–4:00pm)
- * Coffee Mornings (Wednesdays, 10:30am–12:00pm)
- * History Group (last Wednesday of the month, 7:00pm)
- * Green Team (please check the website or social media for meeting dates)

I'd also like to thank the Green Team for recently using the hall as a staging point for installing the wonderful planters you may have seen around the village. Along with other hall members, they also replanted the tractor tyre, which is now looking much improved.

As always, the hall and social club rely heavily on volunteers. To those already helping—thank you for your dedication and hard work, especially with such limited numbers. If you're interested in getting involved, please get in touch via our social media pages or join one of our meetings, held on the third Wednesday of each month at 7:30pm.

EVENTS

First of all, welcome back to the Big Breakfasts at St Keyne Village Hall! Thanks to an excellent new team—made up of both new and returning members—we've been able to bring back your favourite Big Breakfast.

The first event was held on April 11th, with a fantastic turnout and many familiar faces returning. A healthy profit was made, which is being reinvested into new equipment to help ease some congestion points. One of these improvements is a dedicated card reader, as cash is becoming increasingly difficult to access. This will also help ensure that both quality and pricing remain consistent for the foreseeable future. Our next Big Breakfast is scheduled for 01/08/26.

There have been many private bookings at the hall over the past few months, including baby showers and birthday parties for all ages. We also offer a dedicated Disco/DJ setup, which can be booked and run by our in-house expert. Music can be tailored to your taste and made age-appropriate for under 18s, with setlists lasting up to 5 hours—all for just £200.

If you would like to hire the hall for an event, please use the booking form on the website. Alternatively, if you have difficulty accessing the internet, you can call the Village Hall Secretary on 07919 460380.

We have a range of exciting events and clubs coming up over the next few months, including:

History Group – Meets every last Wednesday of the month at 7:30pm
South East Cornwall Model Club – For all things models and miniatures, including railways, dioramas, Airfix, LEGO, and tabletop gaming (such as Warhammer). Meets fortnightly on Thursday evenings from 7:00pm to 10:30pm. First meeting: 07/05/26. Follow their Instagram page for updates.

Curry and Quiz Night – 16/05/26 and 21/11/26. Food from 7:00pm, quiz starts at 8:45pm

Burgers and Bangers Nights – 20/06/26, 18/07/26, 29/08/26, and 12/09/26. Food served from 7:30pm–9:00pm, disco running until 11:00pm

Big Breakfasts – 01/08/26, 10/10/26, and 05/12/26

Oishibuns will also be visiting the car park—please check the Village Hall Facebook and Instagram pages for the latest dates.

Halloween Party – 29/10/26. Doors open at 6:00pm until 8:30pm.

We look forward to seeing you at these events and thank you, as always, for your continued support.

Regards

Dom Folland

St Keyne Village Hall Chair



Trewidland Primary & Pre-School



Come and see what makes our school special!

Discover Trewidland
Primary School, nestled in the
beautiful East Looe valley

New pupils welcome all year round

Call us today to arrange a visit – we'd love
to meet you



For more information:
Call: 01503 240275

Find us on Facebook: @TrewidlandPrimarySchool



Trewidland
Primary
& Pre-School

Spaces Available at Trewidland Pre-School

Looking for the perfect start to your child's early education?

At Trewidland Pre-School, we welcome children aged 3–5 years. We are proud to offer a **friendly, caring and supportive environment** where every child is encouraged to thrive. Our dedicated staff are passionate about helping children grow into **confident, resilient and curious learners**.

Contact us today to arrange a visit or find out more – we'd love to welcome you to our Pre-School family!

Tel: 01503 240275

www.trewidland.net



Trewidland Primary and Pre-school

Spring at Trewidland has been full of excitement. We've been utilising our wonderful outside facilities with our WILD TRIBE sessions. In these, the children have been learning all about the plants and trees we have on our site. They've also been learning about biodiversity and the different ways in which we can attract wildlife.



We have been fortunate enough to have secured a grant from the RHS (Royal Horticultural Society) to support us with our work on biodiversity within the school grounds too. Through this, we have had a particular focus on transforming one area into a nautical themed garden and have even undertaken some work to renovate our pond. It really is an exciting time to be here! In addition to all that, the children of Class 2 also partook in a trip to the Eden Project to support their learning about biomes- and the rainforest in particular. It was an excellent day of



learning opportunities, spent in a delightful setting.

If you are looking for school/ pre-school placements, or know someone who is, then please do get in touch. We have spaces available in each year group – and it would be wonderful to show you round.

Amanda Cummings

PAUL ALLEN

PAINTER & DECORATOR
45 years + Experience

City & Guilds Advanced Qualification

Internal & external work
All paint finishes
All types wallpapering
Minor repairs undertaken



Fully insured
No job too small or too large
Quality assured & guaranteed

I provide a professional
service at a reasonable cost

Please contact me for a free estimate

Mobile: 07548 941437



DEAN WHITE FLOORING

YOUR LOCAL FLOORING EXPERT

From basic carpets to completely bespoke designer floors
& everything in between



FULLY INSURED & GUARANTEED

GET IN TOUCH FOR YOUR FREE NO OBLIGATION QUOTE

· Find us on Facebook

☎ 07359763903

Slimming World

feel
real
good

LISKEARD

St Martin's Church Centre
Lower Hall, Church Street
Liskeard, PL14 3AQ

Monday 5.30 or 7pm

Tuesday 9.30 or 11

Elaine 07818094119

LISKEARD

East Taphouse
Community Hall
Salts Meadow, Liskeard
Cornwall, PL14 4TA

Wednesdays 9.30am,
5.30pm or 7pm

Rachel 07463929696

PENSILVA

Millennium House
Princess Road
Pensilva, PL14 5NF

Friday 5.30pm

Saturday 8am or 9.30am

Hayley 07966370233

real food, real support, real results



ST KEYNE CLUB



If you're new to the village, or even if you've been here some time and haven't got round to it yet, why not pop in to your local Club? We stock keenly priced draught real ale, draught and bottled cider and lager, a selection of wines, gins and a wide range of other spirits, soft drinks and snacks as well (including low/zero lager, beers, cider and gin). A coffee machine in the Hall also supplies excellent freshly-ground coffee at just £1 a cup (but please remember to put a cup in place before you press the button)!

It's not only a great place to meet your friends and neighbours, but it is run entirely by volunteers and all profits go towards funding the Village Hall. We're always on the lookout for more volunteers to help, so if you think you could assist us with a little of your time, please let any of the staff know.



Free **WiFi**® is available.

Well-behaved dogs welcome.

Cash and all major credit/debit cards accepted.

As we are a members' club, the terms of our licence mean that you need to be a member or the guest of a member to use the facilities - but it's free to join, so call in during opening hours and ask for an application form.

If you are hiring the Village Hall for a party or other celebration, use of the Club is also available to members. Just ask at the time of booking. Events organised by non-members can also use the bar facilities, but will need to obtain a Temporary Entertainment Notice to do so. Details can be supplied on request.

OPENING TIMES

Friday - 8pm to 11pm

Saturday - 8pm to 11pm

Sunday and Bank Holiday - 1.30pm to 5.30pm

Please note that these times are subject to staff availability and may be subject to short-notice change.

We wish to remind parents that children under 16 are not allowed in the club unaccompanied



MINERS & O'DONNELL
BUILDING CONTRACTORS

NEIL O'DONNELL & MICHAEL MINERS

☎ 01579 344813

📞 07464370226

✉ MAOBUILDINGCONTRACTOR@GMAIL.COM



Minersandodonnellbuilders.co.uk



BUILDING • RENOVATION • ROOFING • PLASTERING



TRUEFLOW
Heating & Plumbing

Boiler Installations

Boiler Servicing

Boiler Repairs

LPG & Natural Gas

Radiator Power Flushing

All Aspects of Plumbing Work

Full Bathroom Installations

Landlord Gas Safety Certificates

07817 018 348



jimpeen@yahoo.co.uk

trueflowheating_plumbing





STATION MOT LISKEARD

Unit 8, Miller Business Park
Station Road, Liskeard PL14 4DA

CLASS IV & VII MOT'S
Evening and Saturday possible
Please enquire



stationmot@outlook.com

01579 228607 

Browns Nurseries

Trewidland, Liskeard, Cornwall, PL14 4ST

Proudly Growing quality plants for over 50 years.
We offer everything from Patio to Bedding plants,
Perennials and Rock plants



RHS Spring Flower Show 2020:
Sat & Sun 4th & 5th April 2020

Supplying multiple
recognisable names
such as;
Liskeard in Bloom,
Looe in Bloom,
Mount Edgcumbe
and more!



Poisperro Artisan Market
Every Thursday: 10:30am-2:30pm



Find us on Facebook
@Browns Nurseries

OPEN

Monday - Friday
10am - 3pm

Phone Tony Brown:
078132043170

Email: Tonymnursery@gmail.com

Where are we located?

Browns Nurseries, Trewidland, Liskeard, Cornwall. PL14 4ST
Located in the centre of Trewidland, opposite the old shop.

Looe Valley Plants

Specialising in Succulents, Sempervivum, Unique
Arrangements & Terrariums



Contact Alisha
07512584403

LooeValleyPlants@gmail.com
Looe Valley Plants is OPEN

MONDAY - FRIDAY
10am-3pm



EST. 2021

100% Cornish Plants.

Catch us at our markets in 2026!



Find us on social media
@LooeValleyPlants

1st Saturday of every month: The Workshed Collective Market

The Workshed, Cattle Market, Liskeard, PL14 4AA

2nd Saturday of every month: Liskeard Food Market

The Workshed, Cattle Market, Liskeard, PL14 4AA

Last Saturday of every month: Bodmin Market

Mount Folly, Bodmin Square, PL31 2DQ





Mark Gibbons

COUNCILLOR FOR LOOE EAST & DEVIOCK

Maintaining our neighbourhoods and addressing concerns

As the first swallows return and the hedgerows blossom, weeds along kerbs and road edges can quickly get out of hand. Many residents contact councillors about this - and it's a fair concern. This isn't only about appearance. When weeds take hold they can trap debris, block drainage, narrow footways and accelerate damage to surfaces. Cornwall Council is planning a "public realm recovery programme" to address declining standards and improve safety and street condition. Council-funded routine highway weed management stopped in 2013, although some town and parish councils have continued to commission it locally. Since then, unmanaged growth has contributed to the problems many of us see every year.

What's the idea?

The Council is planning a package of improvements including manual and mechanical clearance on the worst-affected estates, better management of amenity and environmental areas (including enhanced cutting and improved verge management), and partnership working with town and parish councils and volunteers to support local pride and community involvement.

Alongside this, it is also planning carefully controlled, limited chemical (glyphosate) treatment - but only on the urban highway network, and only where weeds are present. This is not a return to blanket spraying. It is intended to focus on hard-surface edges such as the kerblines and channels - not whole roads or pavements - and it will not be used on streets with no weeds or on grassed verges, planted areas or wider greenspace, except where needed to prevent the spread of invasive species.

Listening to concerns - and pushing for clarity

Many residents have genuine concerns about glyphosate - around health, pets, wildlife and the wider environment - and these need to be heard and answered.

If the Council is going to take this step, people need clear information on where treatment will - and will not - happen, how it will be kept targeted and minimal, what safeguards will apply in sensitive locations, and how residents can raise concerns. Given that town and parish budgets are set months in advance, any opt-out process must also be

realistic, workable and properly timed.

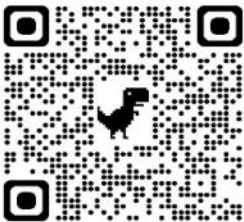
We need to balance these issues fairly: keep our streets safe and well maintained, minimise environmental impact, and communicate honestly and clearly. I will keep pressing for accurate public information, clear boundaries on where treatment happens, and a fair, workable approach for any town or parish council that wants to do things differently.

Do you have strong views on this issue? Please drop me a line – cllr.mark.gibbons@cornwall.gov.uk – and let me know how you feel.

Rosewood Property Services

rosewoodpropertyservices@outlook.com

079 29 59 63 38



Furniture Joinery Kitchens
Property Maintenance
Emergency Holiday Home Call Out



May Informer deadlines

All adverts and articles to be submitted by

FRIDAY 17th July 2026!

Email: Informer@stkeynetrewidlandpc.org.uk

Next publication date

3rd August 2026

Trewidland Village Hall History

Cream Teas and Village Memories



Trewidland Tythe map 1842



Govett's Tenement c1950 (thanks to Molly Berwick)

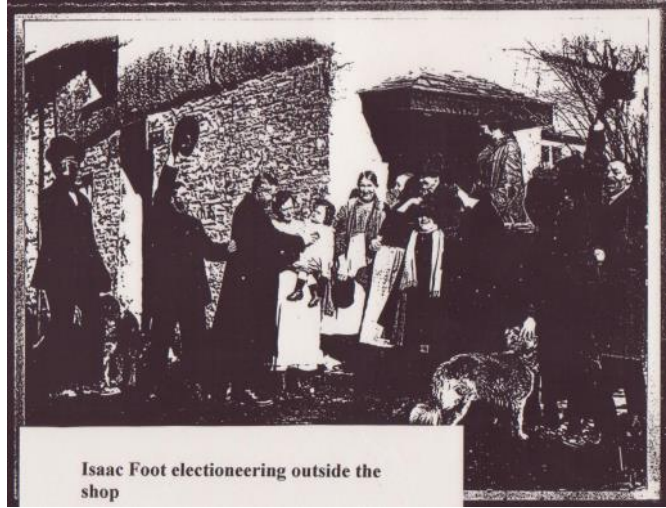
Now known as Gunners Place, the building on the corner of School hill in the middle of Trewidland was recorded as Govett's tenement in the Tythe map & Apportionment Survey of 1842.

		PART OF TREWIDLAND.		
Govett, Samuel Samuel Grigg,	2505	Outer Park,	Arable,
		2506	Middle Meadow,	"
		2507	West Meadow,	"
		2508	South Meadow,	"
		2509	Houses and Garden,	Garden,
		2510	Cottages,	"
		2512	Well Meadow,	Meadow,
		2561	Hatchet Field,	Arable,
		2560	Hatchet Orchard,	Orchard,

Extract from Tythe Apportionment document 1842



Emily Crabb at the foot of steps at Govetts Tenement 1900



Isaac Foot electioneering outside the shop

This building held the village shop in 1900 and Evelyn Kennedy, who donated copies of the photographs above is the little girl being held up to meet Isacc Foot. These and many more records are part of the Trewidland Archive – collected by the Local History Group set up in October 2013 to:

- **Gather and share historical information about our local area**
- **Develop local History walks to share knowledge of our community**
- **Increase our understanding of local family histories**
- **Trace the development of the village from pre-historic times to the present**
- **Where possible to create a 'who lived in my house?' record to allow those moving into the Trewidland area to gain a sense of past lives in the village.**

Many of these resources will be included in the **Exhibition and Cream Tea in Trewidland Village Hall** and we *welcome any photographs, documents and recollections of Trewidland and your own family history to add to these on*

Sunday 10th May 2.30~5.00pm

Everyone Welcome

The Farming Diary



As a community that is surrounded by agriculture, but for the most part having little involvement in it nowadays, we thought it might be useful for the people of St Keyne and Trewidland to have a brief insight into the agricultural calendar, how our work changes through the seasons, and why we can be seen doing what we do in the fields. Every farm is unique, and things will happen differently depending on where you look and which farm you drive past but, this is what happens at Pensipple Farm; a small, mixed family farm on the edge of Trewidland. Spring has finally sprung after what seems a very long and wet winter. As I write, we are nearly at the end of lambing and seem to have had a fairly good run with only one ewe requiring our help to give birth and only one lamb in the stable on the bottle (which is always a bit of excitement for my daughters). The ewes and lambs are under the solar panels at the moment, where they'll stay until the lambs are weaned onto herbal ley in the summer.

We also managed to get our Spring Oats planted in early April. A little later than we would usually aim to plant but it was more important to let the ground dry out a little, warm up and recover from the wet of the winter than try to rush it in. It's now all germinated and we can see the rows of young plants growing away, which is always a good sign.

That being said, this spring has also brought challenges of a different type. As most folk will have seen in their own household bills, the political unrest in the Middle East has had a huge impact on the operational costs of many farms across the country. In the space of three weeks the price of red diesel doubled and, for those that didn't have fertiliser already in the shed, it went up by 30-40%. Fortunately, we are relatively small users of both commodities but, the increase in the amounts we do buy will give us pause for thought in how best to use them.

I've been looking at ways to significantly reduce the amount of fertiliser we use across the farm and we've managed to reduce it considerably over the last few years but, there's more we can do I think, to shield ourselves from this sort of volatility. We've applied to DEFRA for funding to implement a series of trials across 6 farms in Cornwall looking at



in-depth crop nutrition to try to further reduce the use of fertiliser and pesticides. Working on the principle that if a plant that has access to all the nutrients it needs, it will be healthier overall and better able to fend off pest and disease attack without using pesticides. It's really no different to us taking vitamins and eating well to remain healthy, rather than having to take antibiotics regularly because our immune system isn't working 100%, it just takes a bit more figuring out. Fingers crossed we get the funding!!

Anthony Ellis

Village Contacts

PARISH COUNCIL

Chair	Sarah Whiting	07885820798
Clerk	John Hesketh	01579 342437
E-mail	clerk@stkeyneandtrewidlandparish.gov.uk	
Parish Council website	www.stkeynetrewidlandpc.org.uk	
	www.facebook.com/profile.php?id=61551321479150	
Cornwall Councillor	Jane Pascoe	cllr.jane.pascoe@cornwall.gov.uk
Cornwall Councillor	Mark Gibbons	cllr.mark.gibbons@cornwall.gov.uk
Green Team	Martin Cluer	martin.cluer@stkeyneandtrewidlandparish.gov.uk

INFORMER

E-mail informer@stkeynetrewidlandpc.org.uk

ST KEYNE

Chair	Dom Folland	Stkeynevhchairman@gmail.com
Secretary	Lambrini Featherston	stkeynevhsecretary@gmail.com
Treasurer	Stuart Houghton	bonzohoughton@yahoo.com
Bookings	TBA	
Website	www.stkeynevillagehallandclub.org.uk	



VILLAGE HALL

www.facebook.com/stkeynevillagehall

TREWIDLAND

Chair	Steve Bowers	
Treasurer	Nicky Fairey	07764846658
Bookings	nicky_fairey@hotmail.com	
Website	www.trewidlandhall.wixsite.com	

VILLAGE HALL

www.facebook.com/trewidlandcommunitygroup

