

Briefing Note

Improving Footpath Access

1.0 Background

1.1 There are a number of public footpaths which cross the St Keyne Parish. Being geographically small, the footpaths in St Keyne tend to link roads together, or provide access to a particular facility, or continue beyond the Parish boundary to cross other Parishes.

1.2 Maintaining and where necessary, improving access to these footpaths, would provide a benefit to the people of St Keyne, enabling the community to enjoy access to the countryside, while at the same time also providing landowners with safe and secure access points and routes across their land.

Cornwall Council has designated each public footpath within the Parish as either 'Gold', 'Silver', or 'Bronze'. Cornwall Council has devolved responsibility for overseeing the 'Silver' and 'Bronze' footpaths in St Keyne to St Keyne Parish Council.

1.3 Two of the St Keyne footpaths (numbered 629/3/1 and 629/4/1 and designated as 'Silver' footpaths) provide a link between the road to Duloe and the road to St Keyne Well. When combined with these two roads, each footpath provides a circular route starting and finishing at St Keyne Church. Improving and maintaining access to these two footpaths would therefore provide two short, accessible circular routes within the village.

1.4 The one 'Gold' public footpath (numbered 629/1/1) in St Keyne has been subsumed as a public road (Valley View) for more than half of its length. Maintenance and access to the remaining section of the 'Gold' walk, which crosses farmland, is a matter for Cornwall Council.

1.5 Some 'Silver' and 'Bronze' footpaths continue on beyond the St Keyne Parish boundary to cross adjoining parishes. To improve access to these paths which cross other Parishes would depend on adopting a partnership approach with neighbouring Parishes.

2.0 Proposals for discussion

2.1 It is proposed that St Keyne Parish Council should:

- Concentrate on improving access to footpaths 629/3/1 and 629/4/1
- Discuss any potential improvements to these two footpaths with the relevant landowners initially
- Draft a Forward Plan for any improvements, with costings, in liaison with landowners
- Bring the Draft Plan back to St Keyne Parish Council for consideration

- Contact Cornwall Council to seek clarity about how it fulfils its duty to maintain the 'Gold' footpath 629/1/1
- Open discussions with surrounding Parish Councils about how we might work together to improve access to footpaths which continue beyond St Keyne Parish boundary.

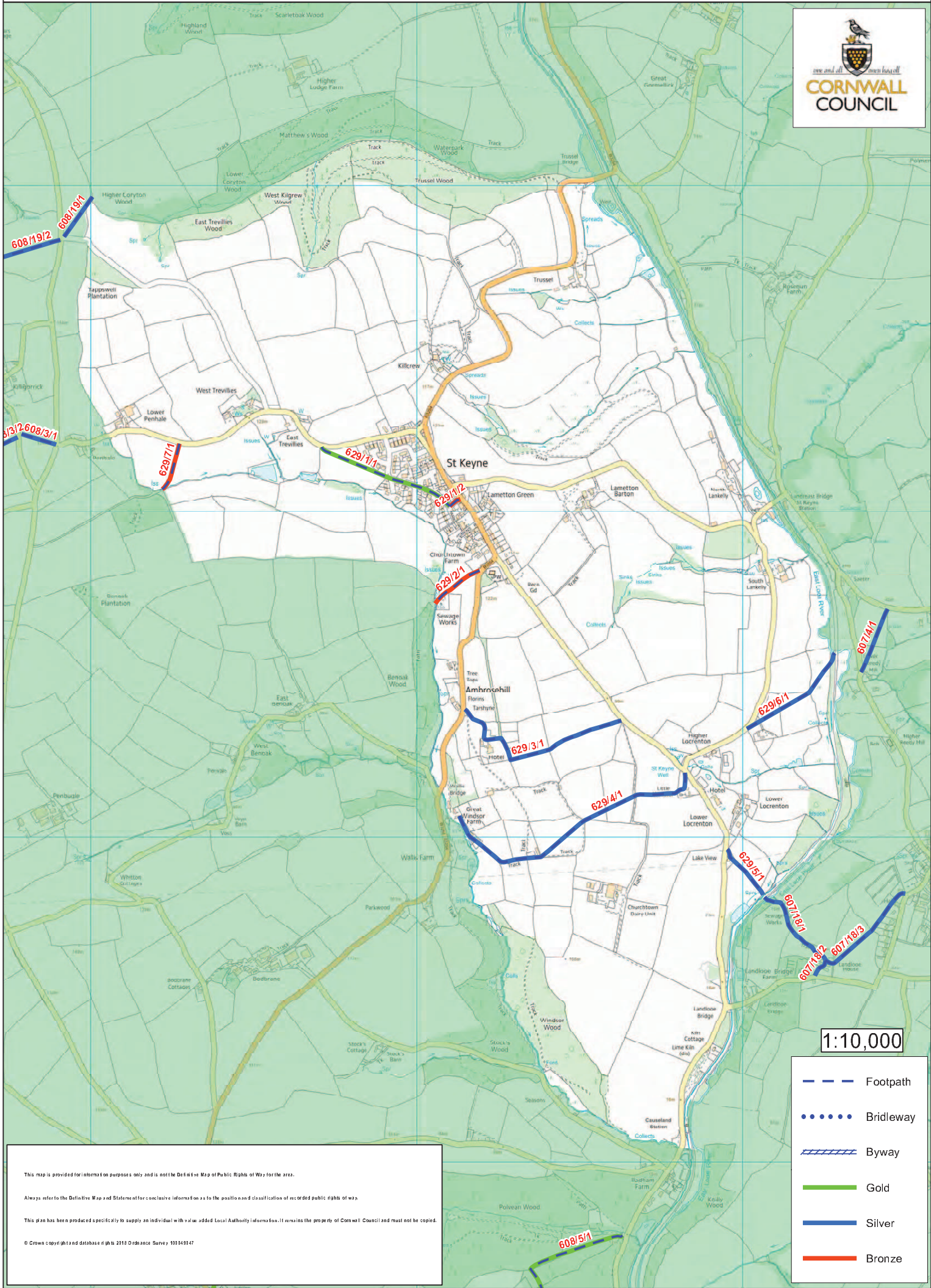
Appendix 1

Map of parish footpaths







Author: Cllr Kevin Shovelton

Date: 5 September 2018

The Parish of St Keyne



1:10,000

-  Footpath
-  Bridleway
-  Byway
-  Gold
-  Silver
-  Bronze

This map is provided for information purposes only and is not the Definitive Map of Public Rights of Way for the area.

Always refer to the Definitive Map and Statement for conclusive information as to the position and classification of recorded public rights of way.

This plan has been produced specifically to supply an individual with value added Local Authority information. It remains the property of Cornwall Council and must not be copied.

© Crown copyright and database rights 2018 Ordnance Survey 100345947